



INSTALLATION GUIDE

23+ / FORD BRONCO RAPTOR BOMBER REAR BUMPER



PREPARATION

We recommend reading through the installation instructions in whole before performing the work.

- Disconnect the negative battery terminal. Park the vehicle on level ground and set the emergency brake.
- **When button head bolts are being used, install the supplied washer on the nut side. Then, hold the bolt stationary and only turn the nut to tighten. Do not turn the bolt to tighten hardware assembly, unless otherwise noted.**
- Anti-seize is recommended for all fasteners.

SKILL LEVEL

-Medium/Advanced

This Install requires some wiring knowledge

****This installation requires 2 people for best results****

TIME REQUIRED

- 2 hours for OEM Removal/Bumper Install

-1 Additional Hour to Wire Cube Lights

****Labor Rates are based on a vehicle with no pre-existing damage. Wiring labor is based on a standard wiring procedure with light switches installed in an easily accessible location. Custom light triggering or switch mounting location will result in a greater labor charge.****

INCLUDED IN KIT

- | | |
|--|-----------------------------------|
| 2- Hex Head Bolts (3/4-10 X 1 1/2") | 2- rubber bumper (1") |
| 2- Nylon Lock Nuts (3/4-10") | 2- Nylon Nut (5/16-18") |
| 4- Flat Washers (3/4") | 2- Flat Washer (5/16") |
| 2- Nylon Lock Nuts (1/2-13") | 8- Flat washer (1/4") |
| 2- Button Head Bolts (1/2-13 X 1 1/2") | 4- Nylon Lock Nut (1/4-20") |
| 2- Flat Washer (1/2") | 4- Button Head Bolt (1/4-20 x 1") |
| 4- Hex Head Bolts (3/8-16 x 1 1/4") | |
| 4- Flat Washers (3/8") | |
| 3- One Foot Section of 20 Gauge Black Wire | |
| 6- 22-18 Gauge Butt Connectors | |

TOOLS REQUIRED

- (Sockets) 9/16, 3/4, 1-1/16, 1-1/8, 13mm, 18mm
(Box end wrenches) 9/16, 3/4, 1-1/16, 1-1/8, 13mm, 18mm
(Allen wrenches) 5/16
Fastener remover or flathead screwdriver
Zip ties
Ratchet
Flat File
Electrical Tape
Wire Crimper Tool



INSTALLATION **GUIDE**

ROCK FIGHTER REAR BUMPER

23+/**FORD BRONCO RAPTOR**

STEP 1

Disconnect the wire harness on both the driver and passenger sides.

REMOVAL





INSTALLATION GUIDE

BOMBER REAR BUMPER 23+ / FORD BRONCO RAPTOR

REMOVAL

□ STEP 2

Remove the tow hooks using a (18mm socket). ****You can keep the bolts and tow hooks for later on in the install****



BOMBER REAR BUMPER 23+ / FORD BRONCO RAPTOR

REMOVAL

□ STEP 3

Using a (13mm socket) remove the mounting bolts. You can now fully remove the bumper.

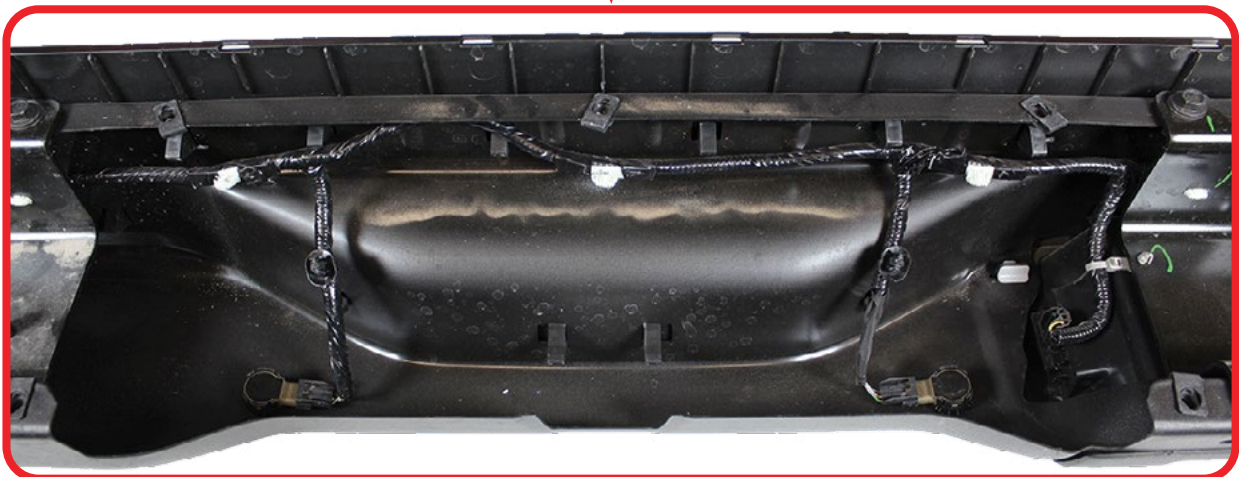
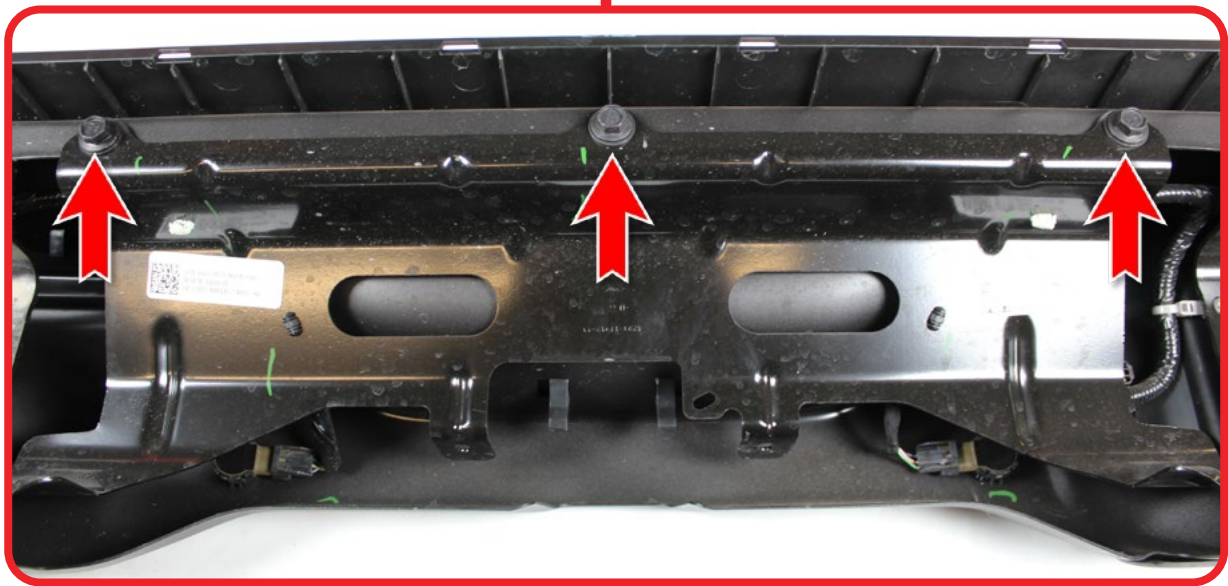
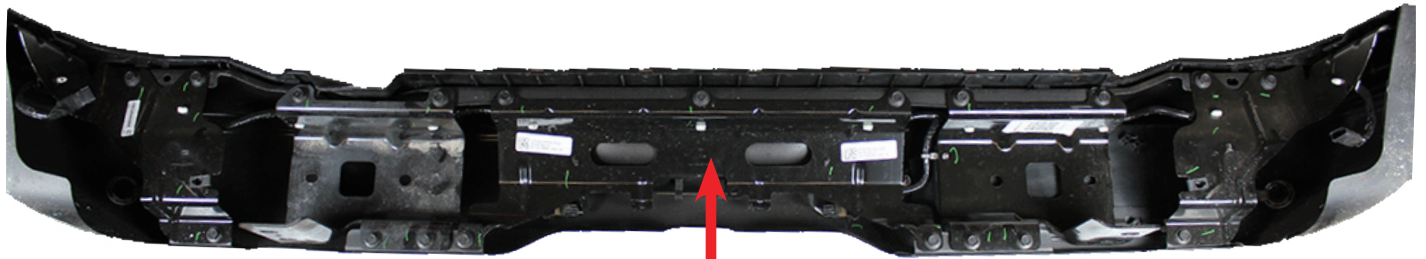


BOMBER REAR BUMPER 23+/**FORD BRONCO RAPTOR**

REMOVAL

STEP 4

Remove the middle metal cover using a (13mm socket) to expose the wire harness and sensors.

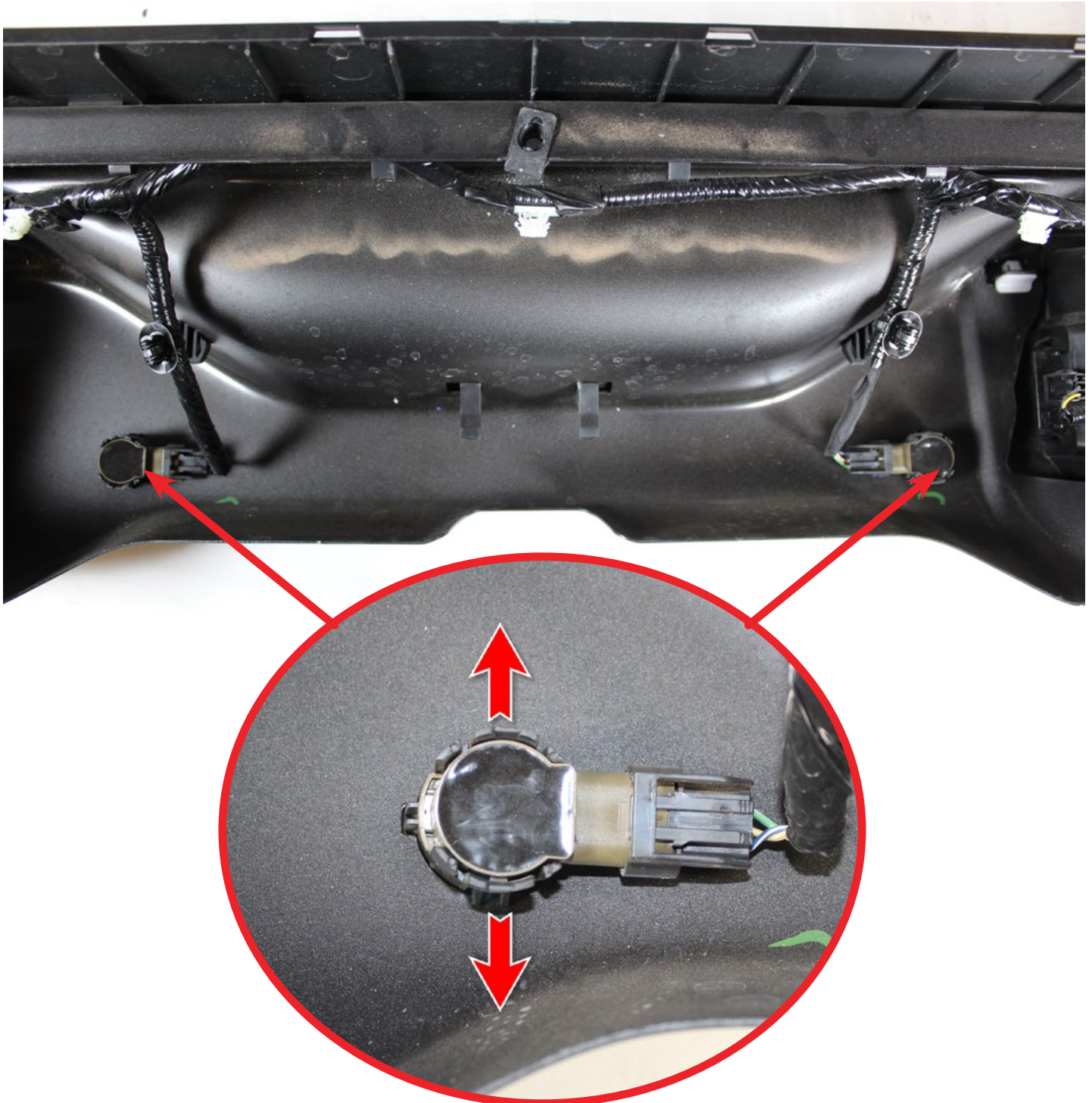


BOMBER REAR BUMPER 23+/FORD BRONCO RAPTOR

REMOVAL

STEP 5

Remove the sensors from the bezels by spreading the tabs. ****Spread carefully****



BOMBER REAR BUMPER 23+/**FORD BRONCO RAPTOR**

STEP 6

Disconnect the license plate light by pushing in on the tab and pulling.

REMOVAL

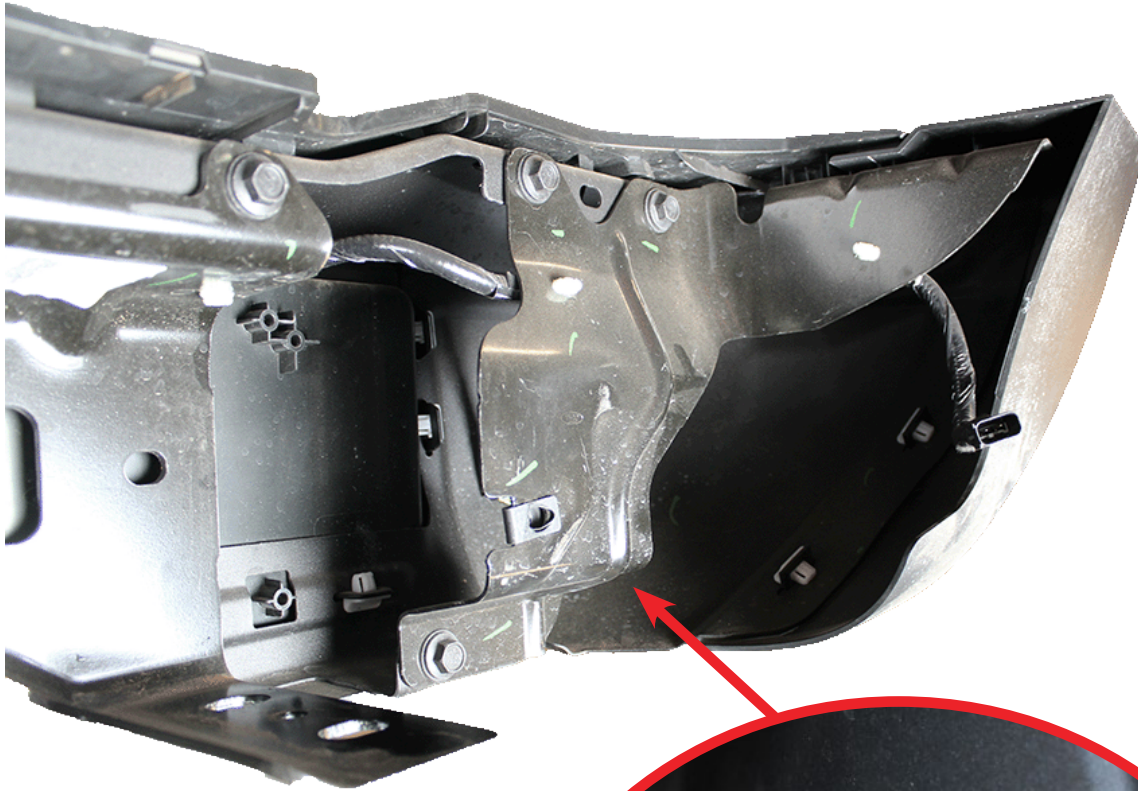


BOMBER REAR BUMPER 23+ / FORD BRONCO RAPTOR

REMOVAL

□ STEP 7

Repeat step 5 to remove the sensor. ****Remember the orientation for this will be important in step 10****





INSTALLATION GUIDE

ROCK FIGHTER REAR BUMPER

23+/**FORD BRONCO RAPTOR**

STEP 8

Install the supplied mounting brackets using the stock hardware removed from **step 2**. Then install the provided 3/4" bolts, washers, and nylon lock nuts using a (1-1/8 socket) and a (1-1/16 wrench).

INSTALLATION

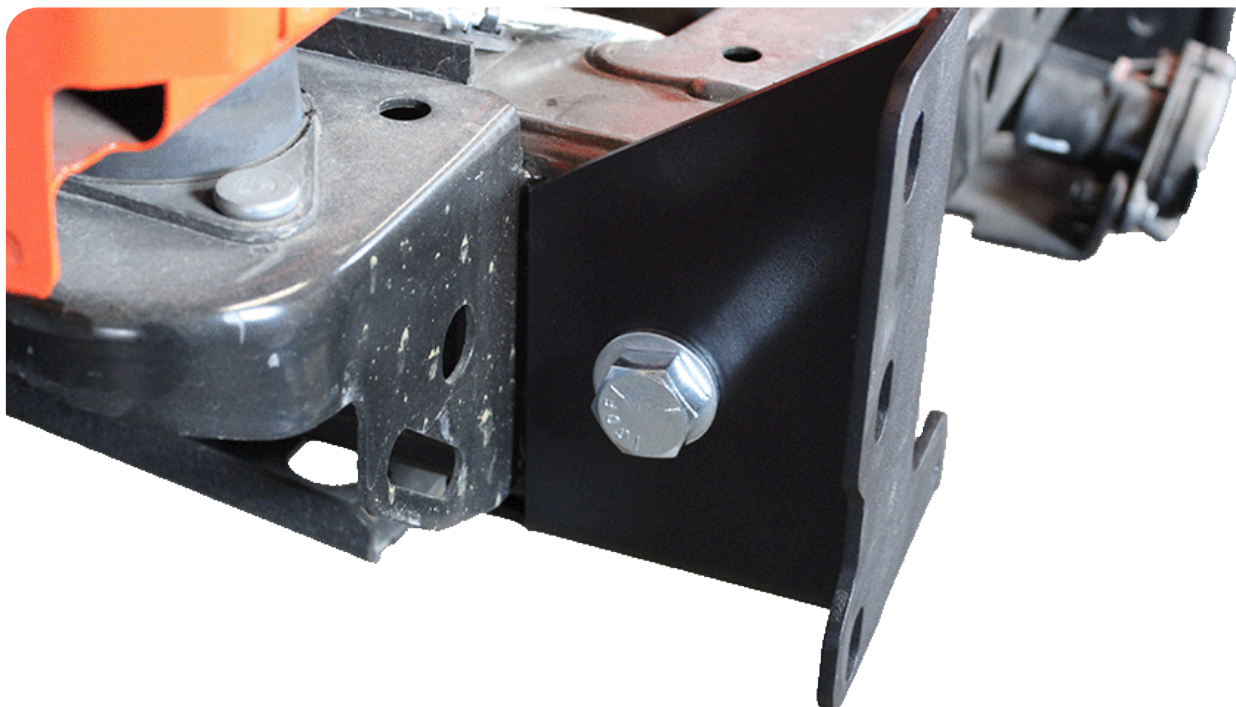
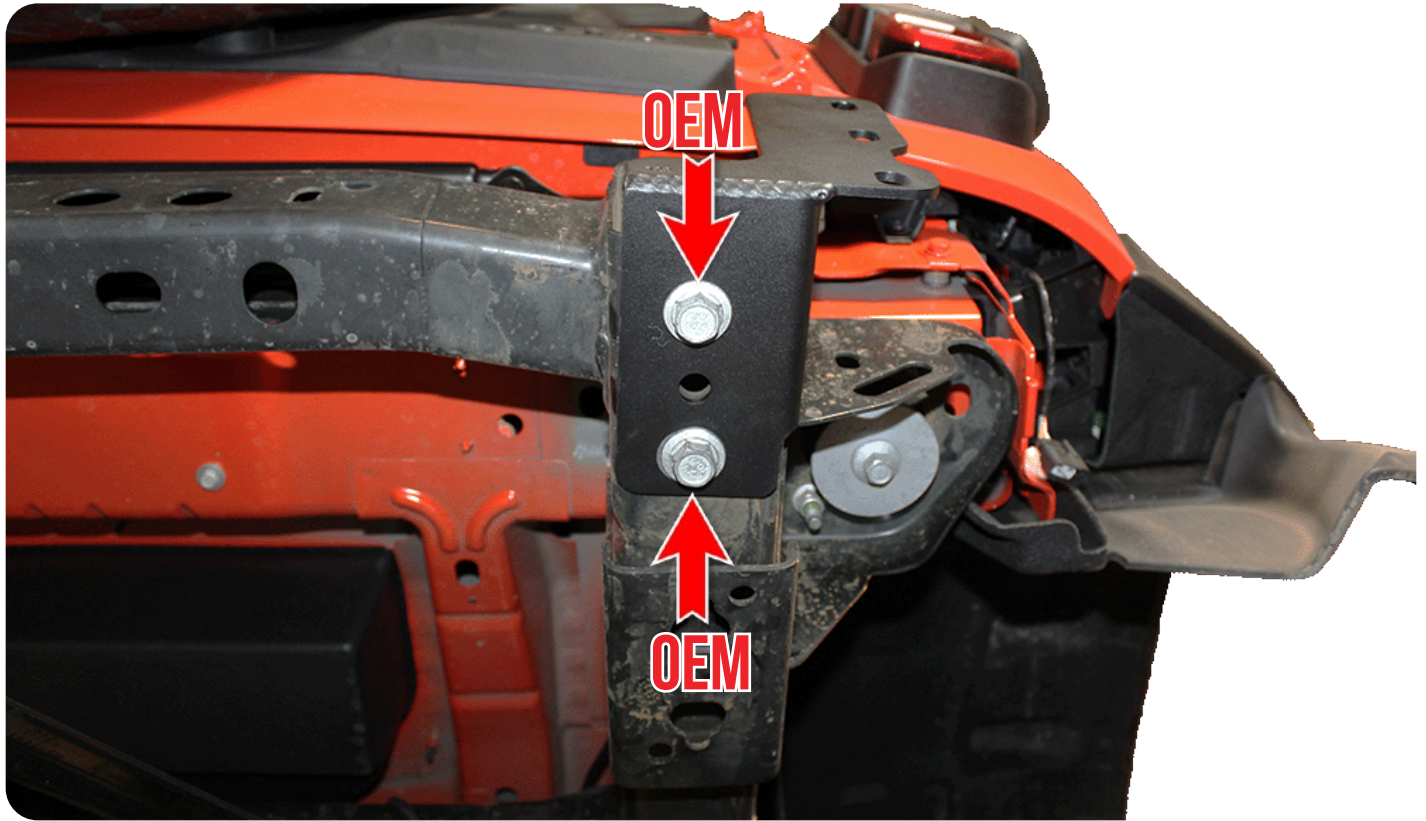




INSTALLATION GUIDE

BOMBER REAR BUMPER
23+ / FORD BRONCO RAPTOR

INSTALLATION

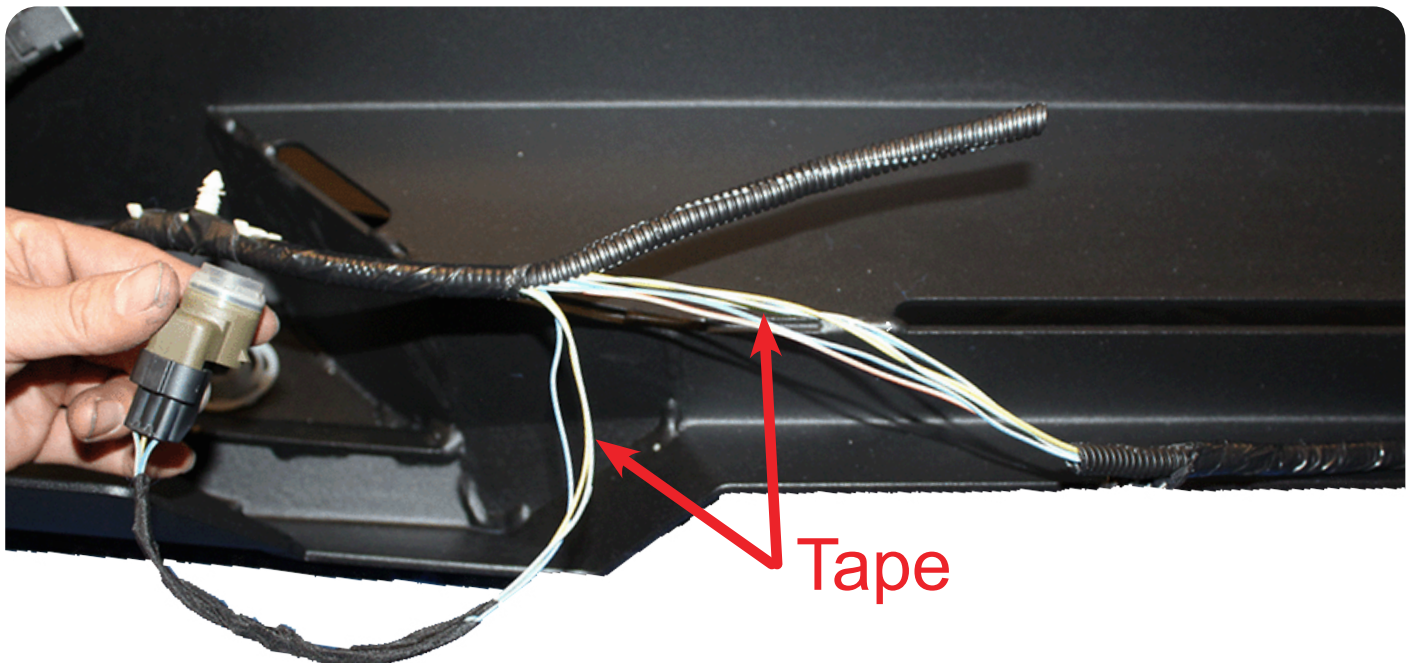
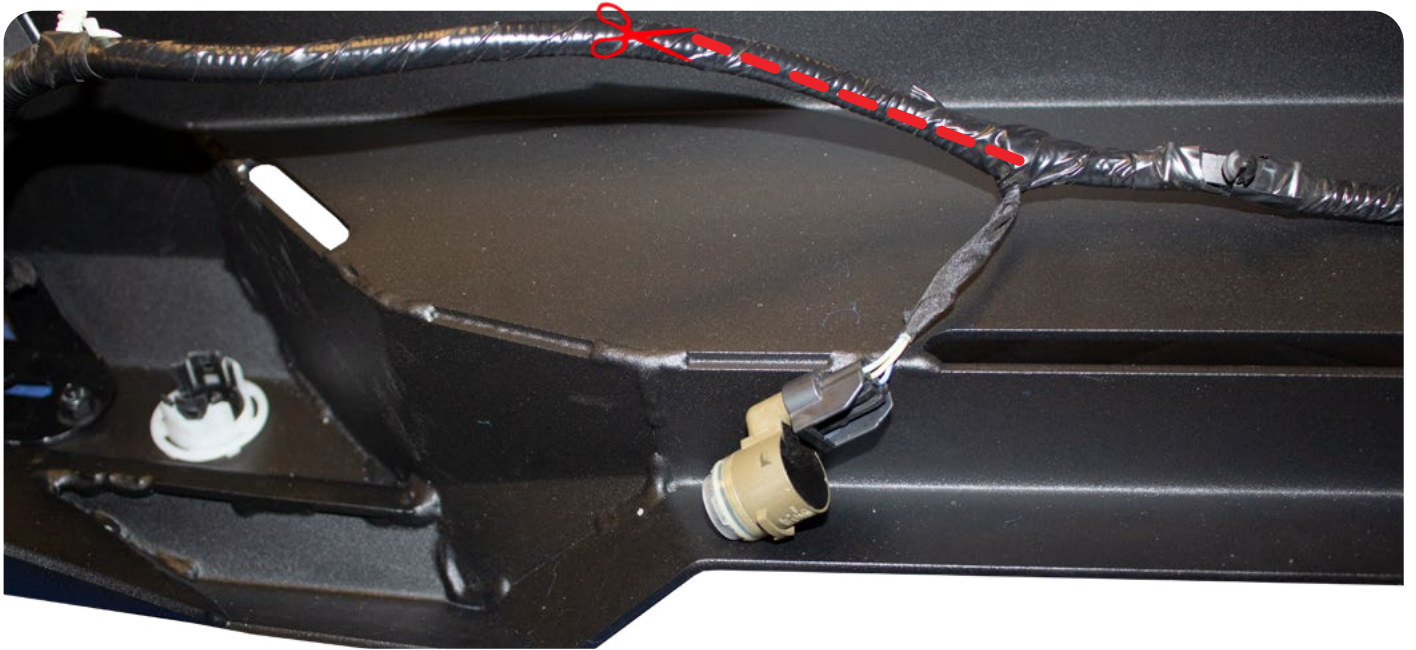


BOMBER REAR BUMPER 23+ / FORD BRONCO RAPTOR

INSTALLATION

□ STEP 9

You will notice that the inner sensor on the (passenger side) will not reach the bezel destination, you will need to open up the wiring harness by cutting it to get enough more length to reach the sensor bezel. After you achieve the correct length, tape the exposed wires using electrical tape.



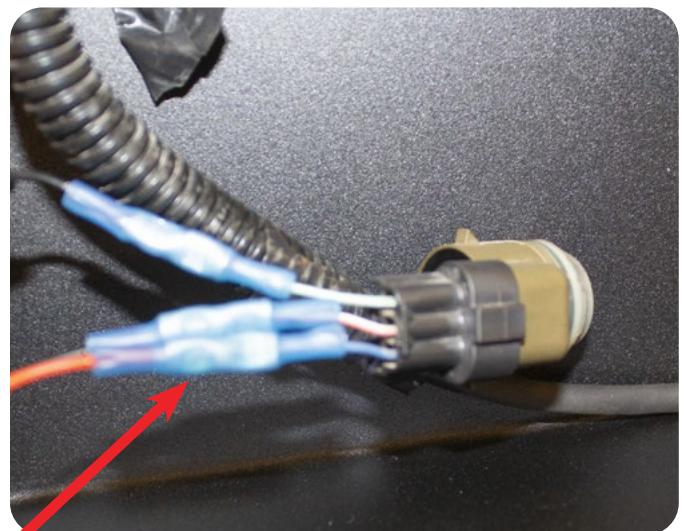
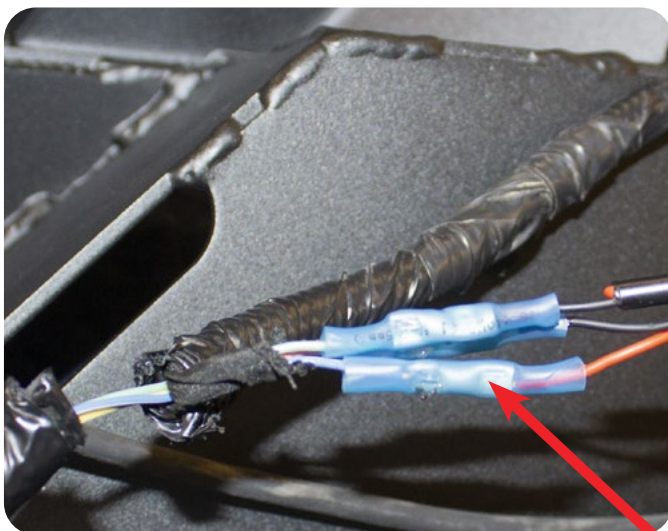
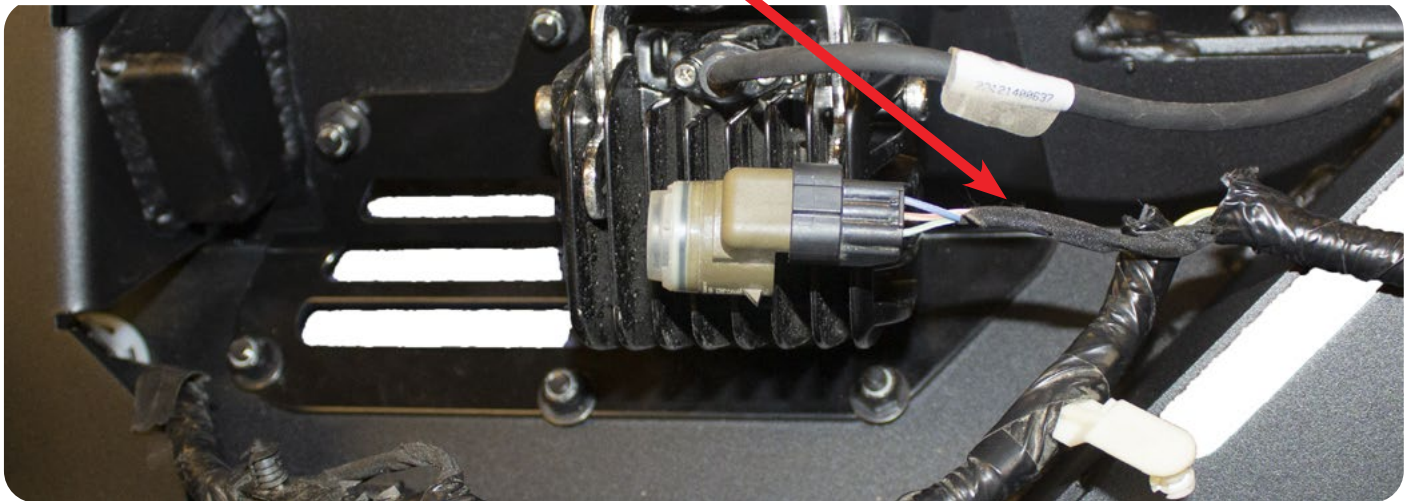
BOMBER REAR BUMPER 23+ / FORD BRONCO RAPTOR

INSTALLATION

□ STEP 10

On the opposite side (driver side) of the wiring harness you will need to extend the inner sensor wires as they will not reach the sensor location. There will be 3 (One Foot Section of 20 Gauge Black Wire) with butt connectors and loom to extend the sensor wires. First unravel the tape from the sensor wire to expose the wires that will be spliced into. Then extend the 3 wires and tape back up.

Cut sensor wires here



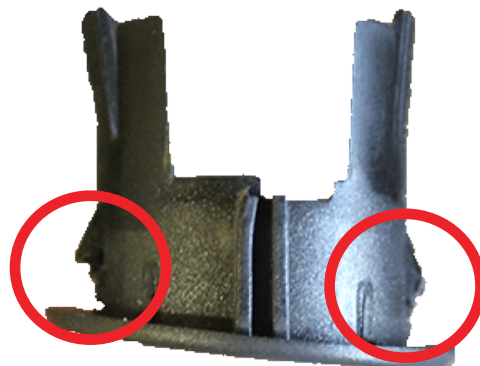
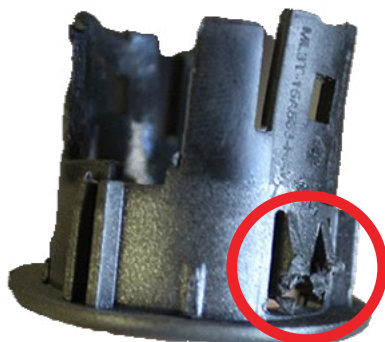
Extend wires

BOMBER REAR BUMPER 23+ / FORD BRONCO RAPTOR

INSTALLATION

□ STEP 11

Install the sensor bezels into the ADD bumper. Ensure they are in the same orientation as OEM.
****If the bezels do not click into place you may have to trim the tabs to match the thickness of the bumper as shown below****

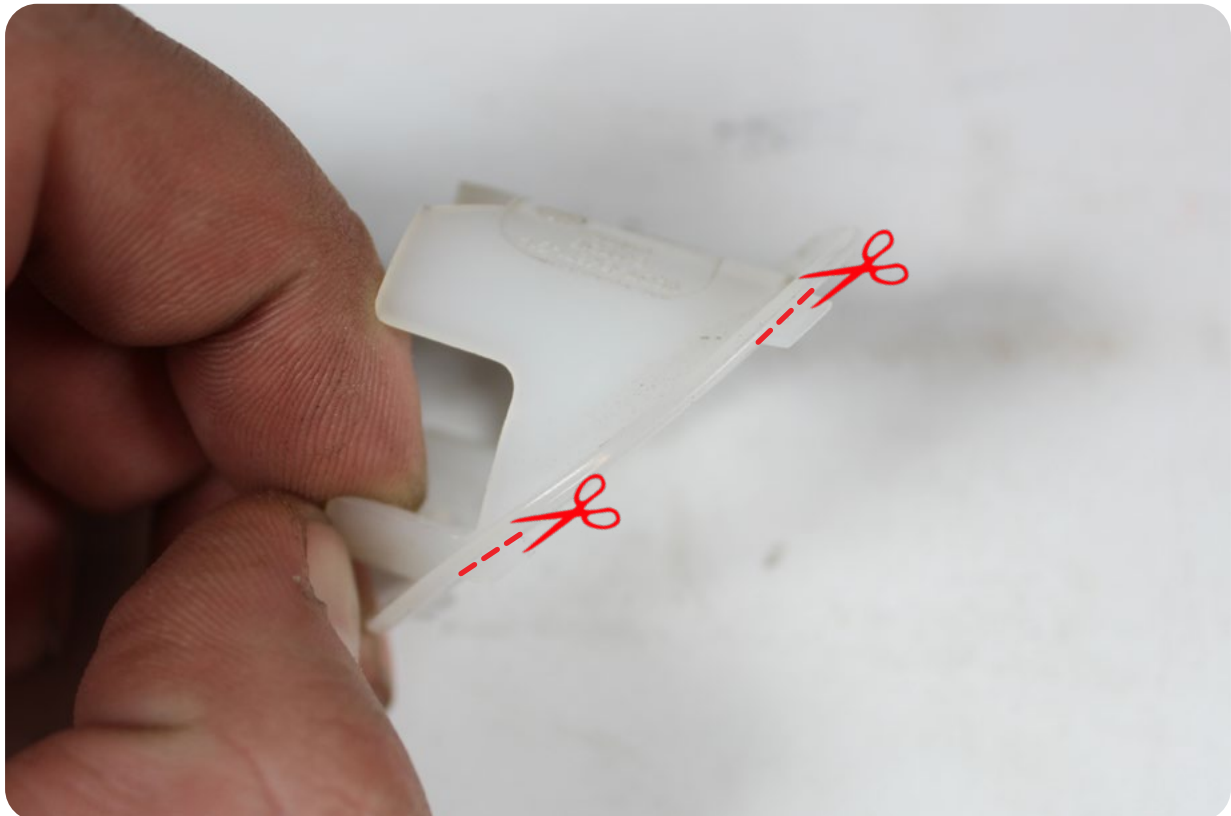


BOMBER REAR BUMPER 23+/FORD BRONCO RAPTOR

□ STEP 12

For the outer sensor bezels, trim the tabs on the backer by using a (flat file) and install the sensor bezels with driver to passenger and passenger to driver. **(Ensure that the sensor bezels are installed with the sensor pointing down as shown below)**

INSTALLATION





INSTALLATION GUIDE

BOMBER REAR BUMPER
23+ / FORD BRONCO RAPTOR

INSTALLATION

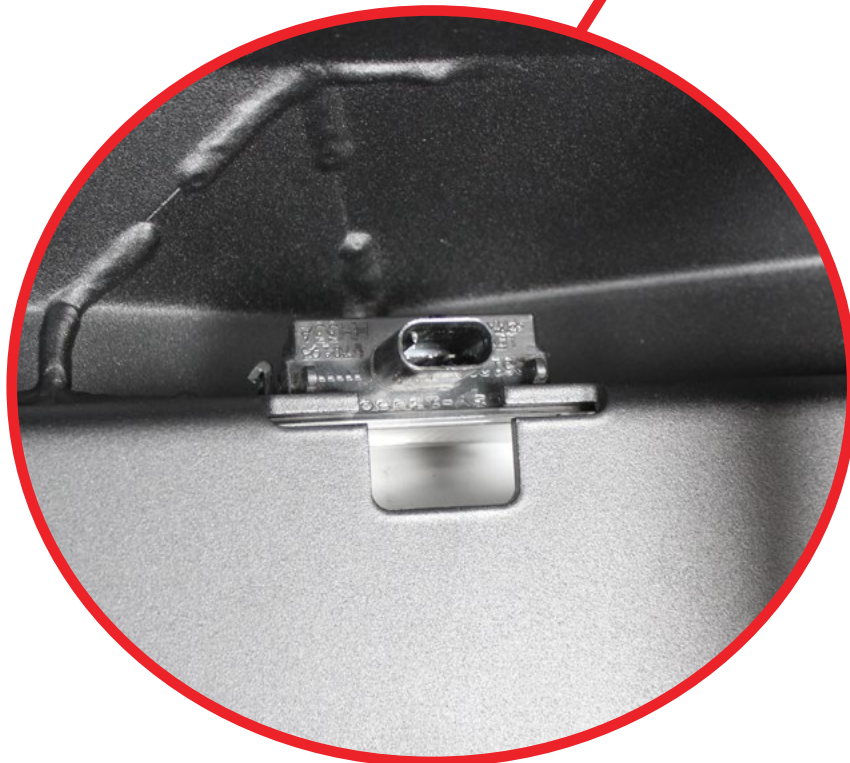
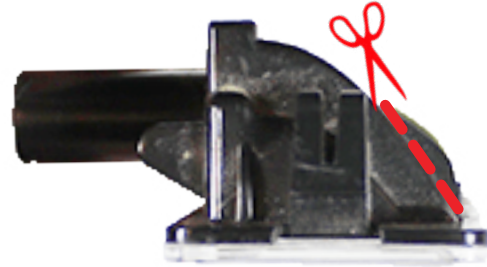


BOMBER REAR BUMPER 23+ / FORD BRONCO RAPTOR

STEP 13

Trim the tabs by using a (flat file) as shown below on the license plate light and install on your ADD bumper.

INSTALLATION

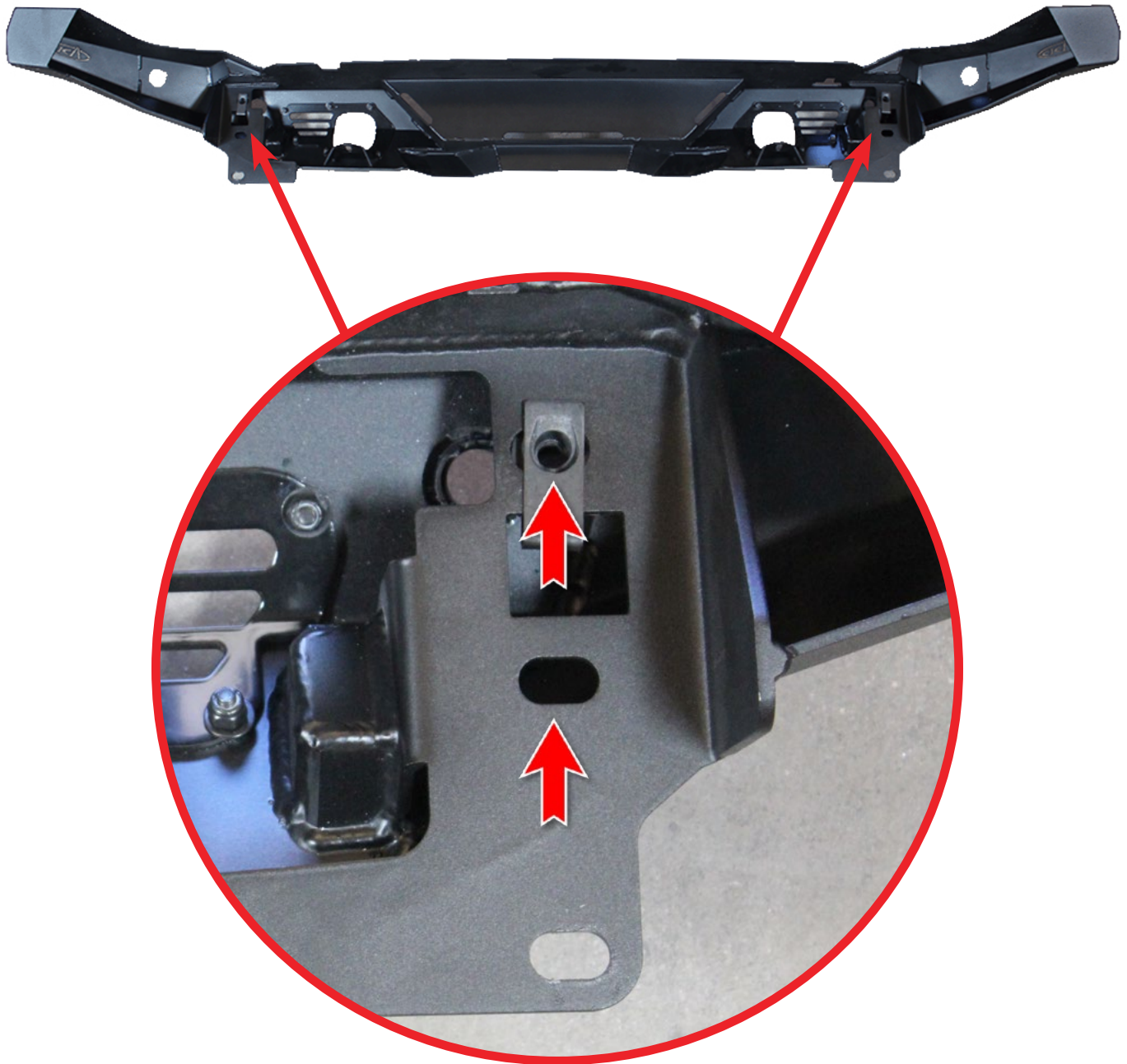


BOMBER REAR BUMPER 23+ / FORD BRONCO RAPTOR

INSTALLATION

□ STEP 14

Install the provided nut clips in the slots on both mounting plates as shown below.

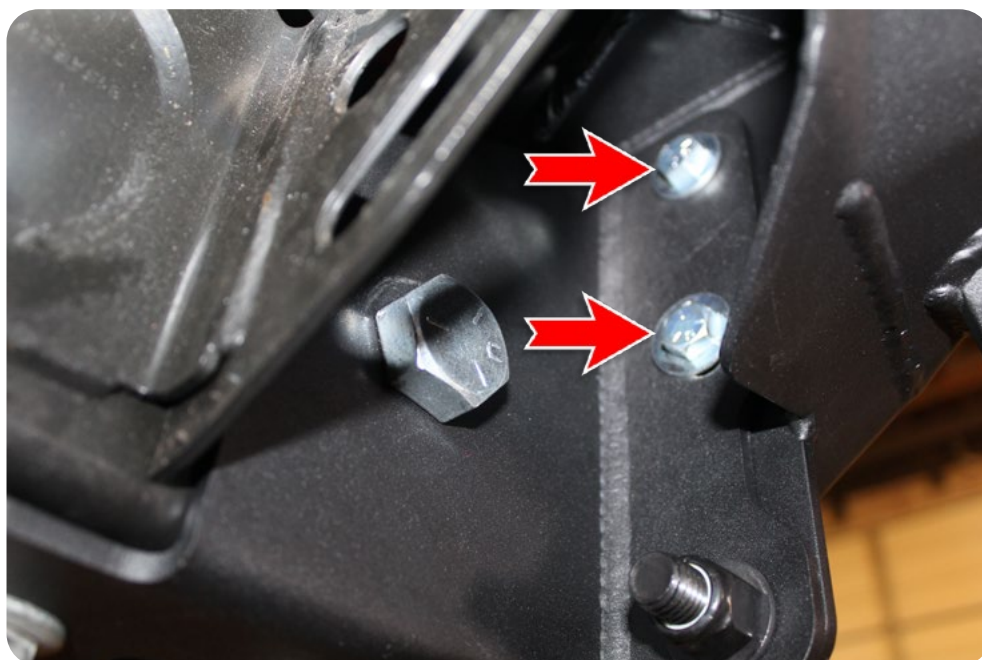
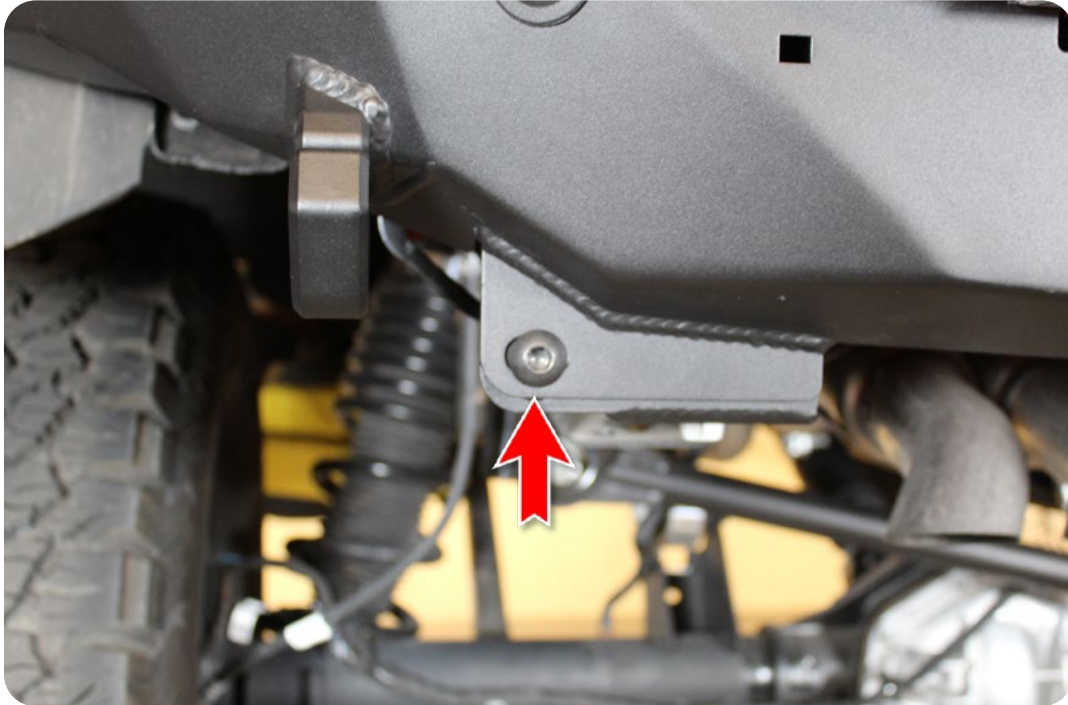


BOMBER REAR BUMPER 23+ / FORD BRONCO RAPTOR

INSTALLATION

□ STEP 15

You can now install the bumper with the 2x 1/2" button head bolts, washers, and nylon lock nuts using a (5/16 allen wrench) and (3/4 wrench). and also install the 4x provided 3/8" hex head bolts, and washers using a (9/16 socket/wrench).





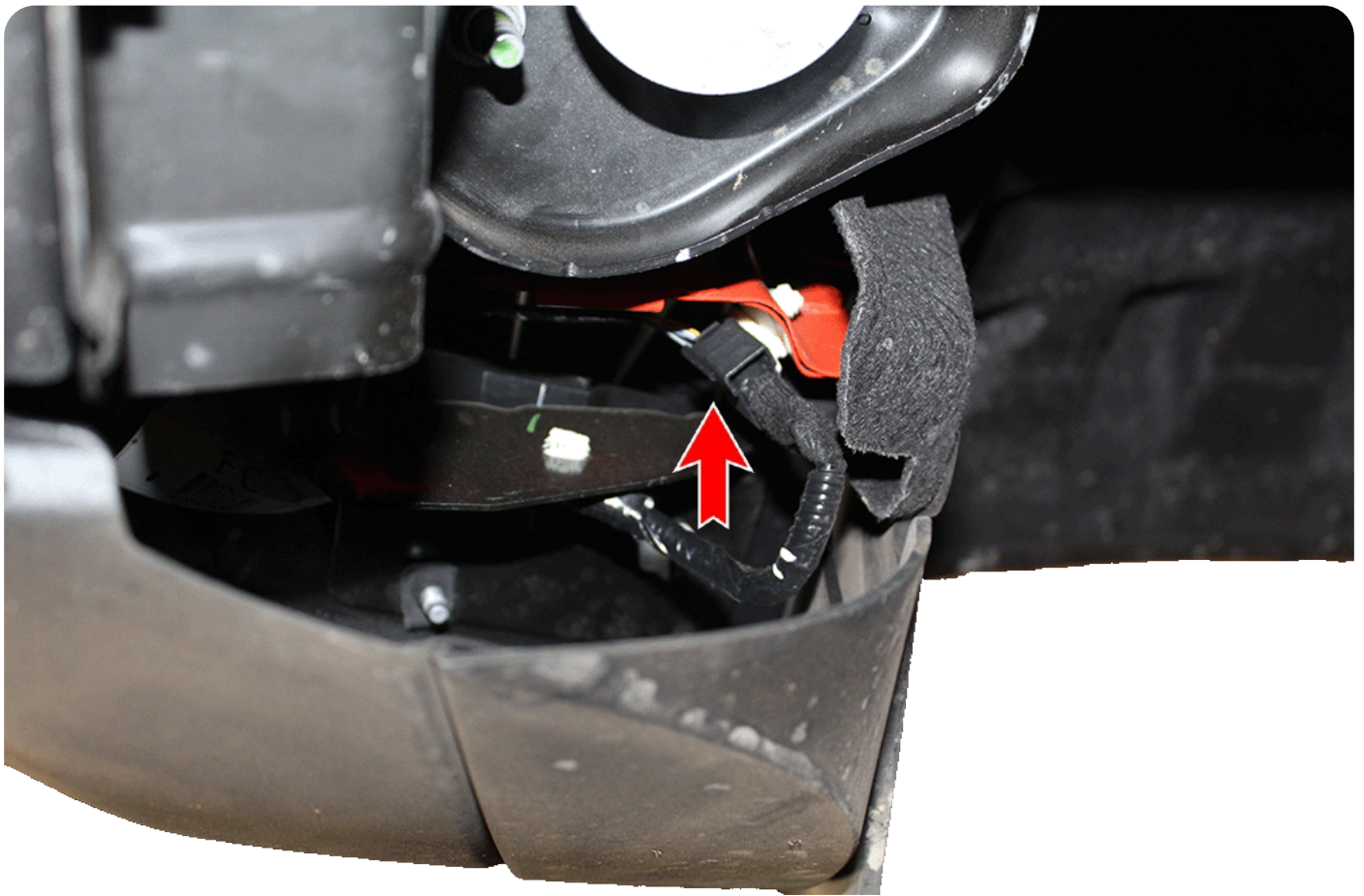
INSTALLATION GUIDE

BOMBER REAR BUMPER
23+ / FORD BRONCO RAPTOR

INSTALLATION

STEP 16

Plug in the wire harness on both the driver and passenger sides.

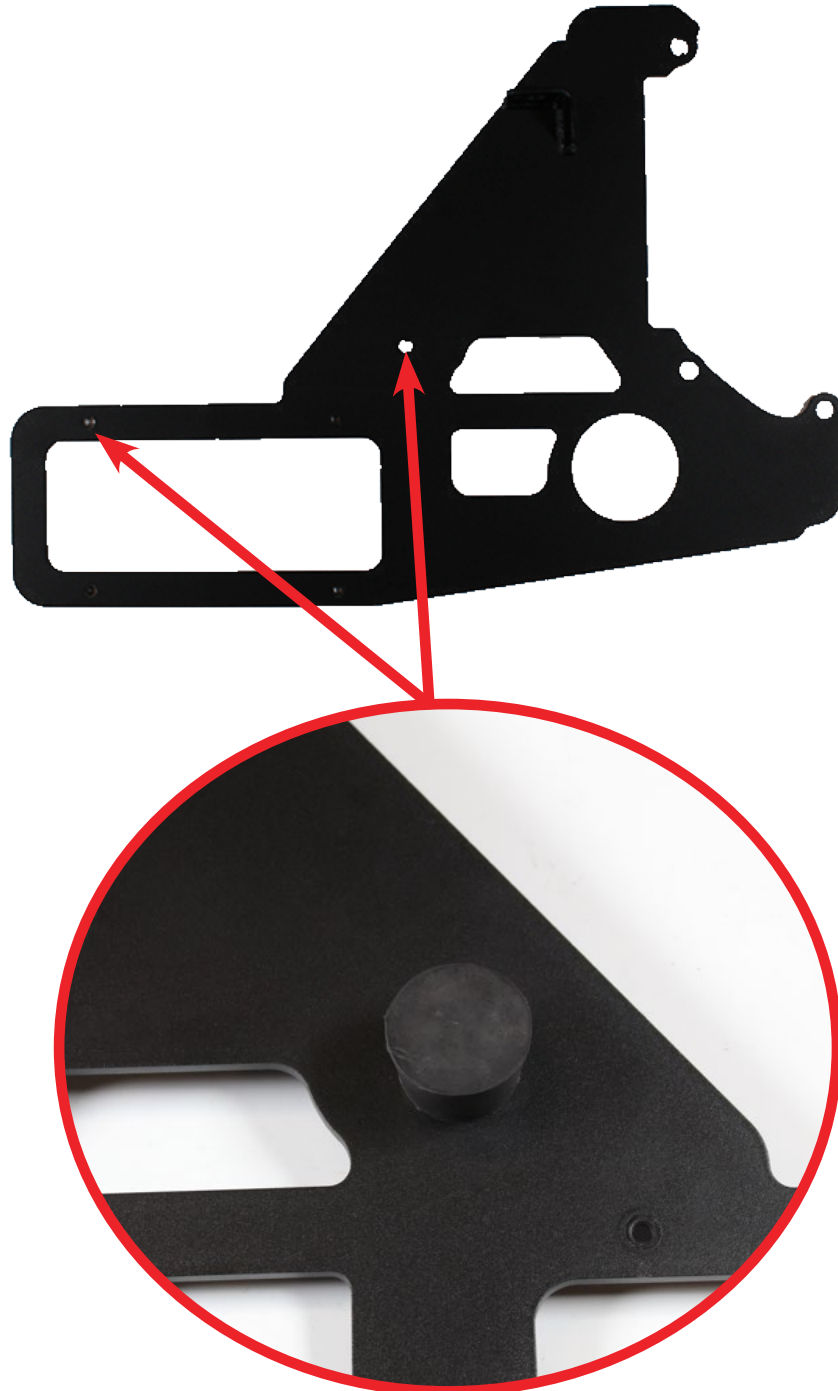


BOMBER REAR BUMPER 23+ / FORD BRONCO RAPTOR

INSTALLATION

□ STEP 17

Install the 1" rubber bumper in the position shown below facing behind the bracket with the provided 5/16-18" nylon lock nut and 5/16" flat washer using a (1/2" socket/wrench).



BOMBER REAR BUMPER 23+ / FORD BRONCO RAPTOR

□ STEP 18

Remove the 3x OEM bolts using a (1/2 socket). Then using the same hardware, install the license plate bracket.

INSTALLATION





INSTALLATION GUIDE

BOMBER REAR BUMPER
23+ / FORD BRONCO RAPTOR

INSTALLATION





INSTALLATION GUIDE

BOMBER REAR BUMPER 23+ / FORD BRONCO RAPTOR

FINAL

STEP 1

Stand back and enjoy your new ADD Bomber™ rear bumper.

Check and re-tighten, if needed, all mounting bolts after 100 miles and periodically thereafter.



THIS PRODUCT IS PROTECTED BY ONE OR MORE U.S. PATENTS
WWW.ADDICTIVEDESERTDESIGNS.COM/PATENTS

FOR ADDITIONAL SUPPORT OR TECHNICAL QUESTIONS,
PLEASE CALL 480-671-0820 OR
EMAIL INFO@ADDICTIVEDESERTDESIGNS.COM