



# INSTALLATION GUIDE

## STEALTH FIGHTER REAR BUMPER 22+/TOYOTA TUNDRA



### PREPARATION

**We recommend reading through the installation instructions in whole before performing the work.**

- Disconnect the negative battery terminal. Park the vehicle on level ground and set the emergency brake.
- When button head bolts are being used, install the supplied washer on the nut side. Then, hold the bolt stationary and only turn the nut to tighten. Do not turn the bolt to tighten hardware assembly, unless otherwise noted.
- Anti-seize is recommended for all fasteners.



#### SKILL LEVEL

-Easy/Intermediate

**\*\*This installation requires 2 people for best results\*\***



#### TIME REQUIRED

- 4 hours for OEM Removal/Bumper Install
- 1 Additional Hour to Wire Cube Lights

**\*\*Labor Rates are based on a vehicle with no pre-existing damage. Wiring labor is based on a standard wiring procedure with light switches installed in an easily accessible location. Custom light triggering or switch mounting location will result in a greater labor charge.\*\***



#### INCLUDED IN KIT

- |  |                                 |
|--|---------------------------------|
| 4- Nylon Lock Nuts (1/2-13")           | 2- Flat Washers (3/8")          |
| 4- Button Head Bolts (1/2-13 X 1 1/2") | 2- Sheet Metal Screws (1/4")    |
| 4- Flat Washer (1/2")                  | 4- 3m Double Sided Tape (1"x1") |
| 4- Nylon Lock Nuts (1/4-20")           | 2- 3/4" Diameter Sensor Plug    |
| 4- Button Head Bolts (1/4-20 X 1")     | 2- 3/4" Rubber Grommet          |
| 4- Flat Washer (1/4")                  |                                 |
| 2- Snap In Nut (1/4")                  |                                 |
| 2- Hex head bolts (M10-1.25 x 35mm)    |                                 |
| 2- Hex Head Bolt (3/8-16 x 1")         |                                 |
| 2- Nylon Lock Nuts (3/8-16")           |                                 |



#### TOOLS REQUIRED

- (Box end wrenches) 3/8, 9/16, 3/4, 7/8
- (Sockets) 5/16, 3/8, 7/16, 1/2, 9/16, 7/8
- (Allen wrenches) 8mm, 5mm
- Fastener remover or flathead screwdriver
- Adjustable wrench
- Needle nose pliers
- Trim removal tool
- Razor blade
- Zip ties
- Ratchet

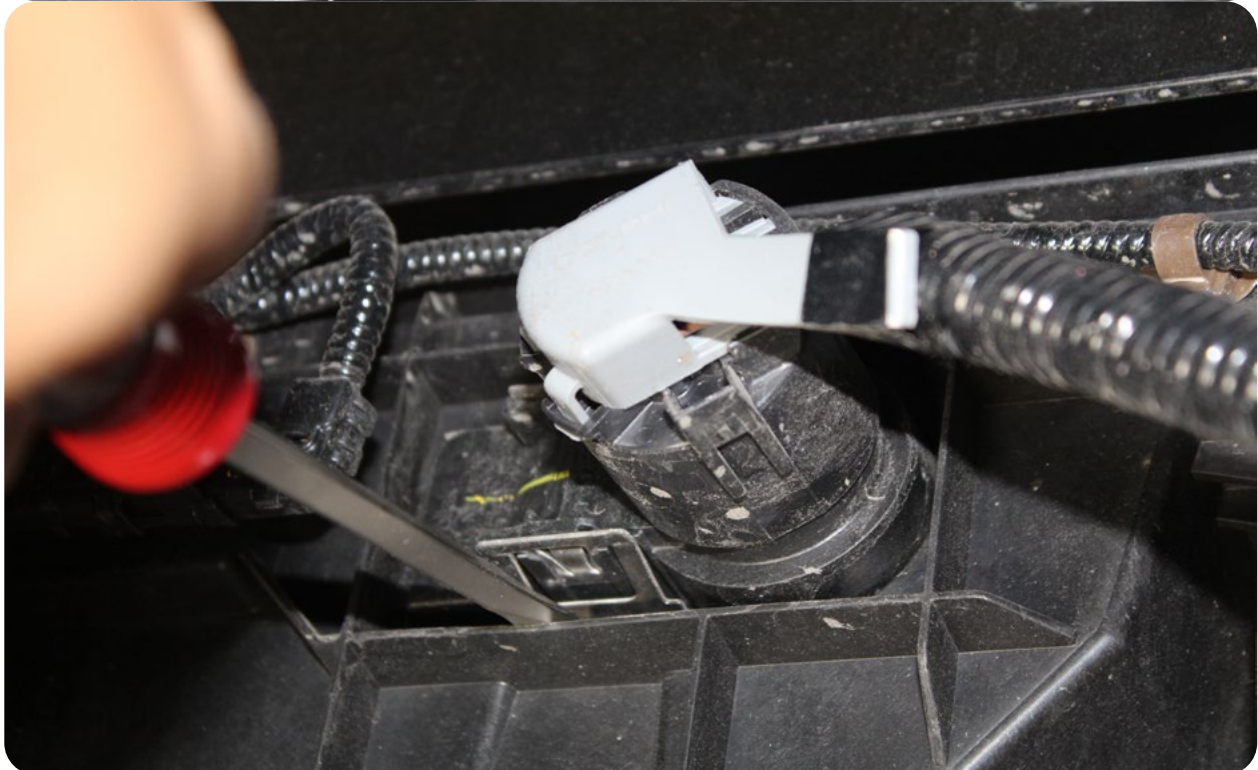
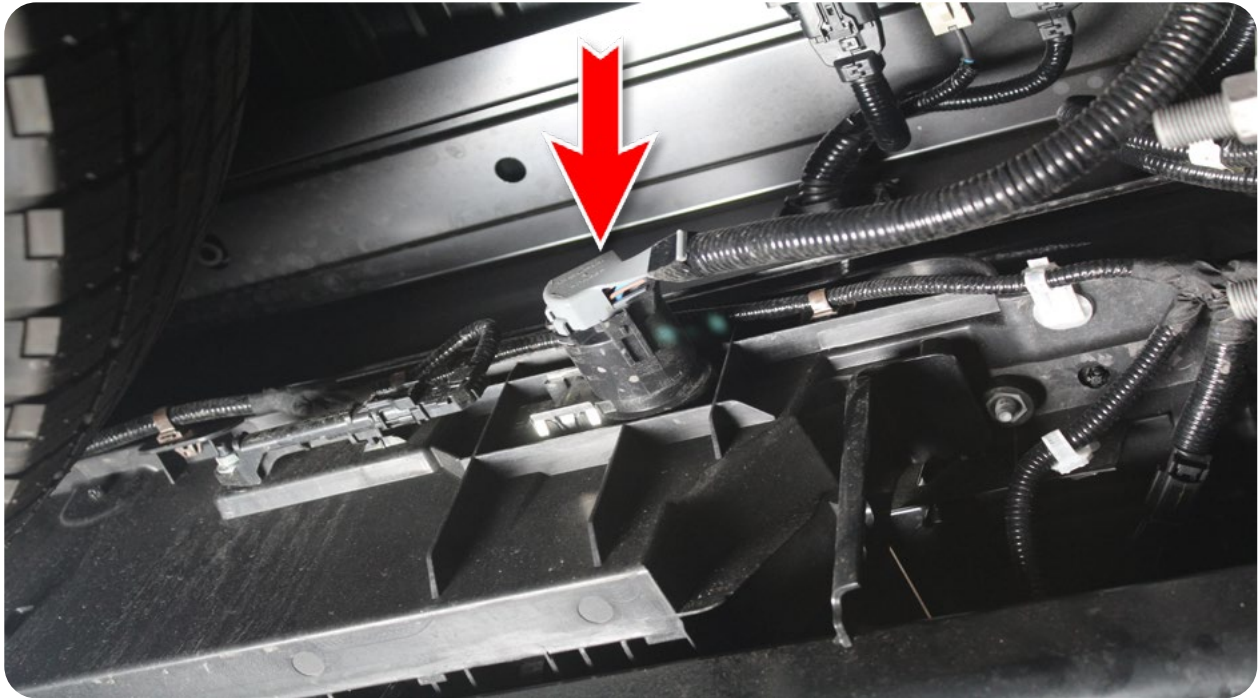
## STEALTH FIGHTER REAR BUMPER

22+/TOYOTA TUNDRA

### □ STEP 1

Unplug/remove the trailer plug on the backside of the bumper using a (flathead screwdriver) to release clips.

## REMOVAL



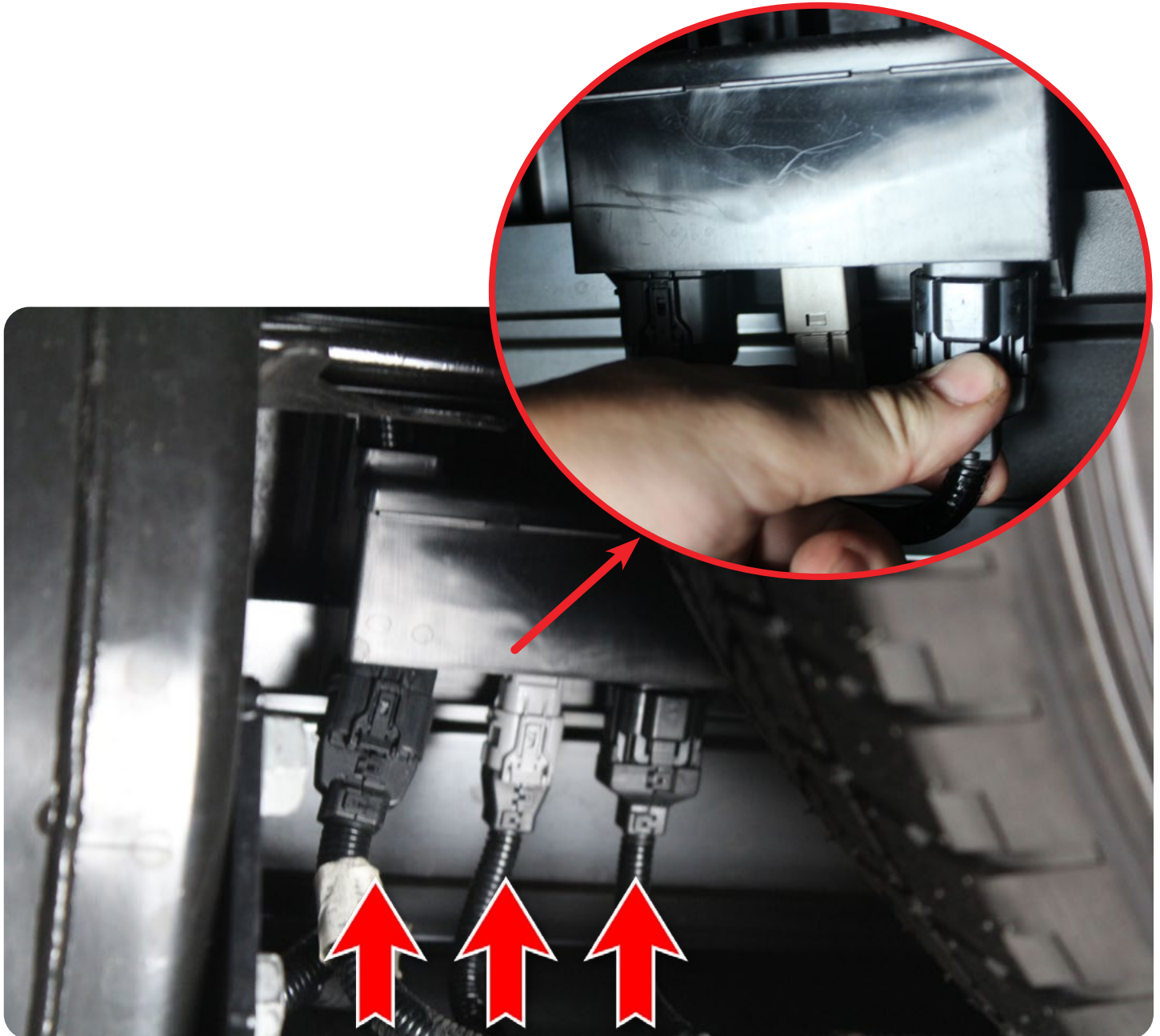
## STEALTH FIGHTER REAR BUMPER

22+/TOYOTA TUNDRA

### STEP 2

Depress and pull all three plugs on the wiring harness located underneath the bed on the passenger side of the spare tire.

## REMOVAL



## STEALTH FIGHTER REAR BUMPER

22+/TOYOTA TUNDRA

## REMOVAL

### STEP 3

Remove all three retainer clips under the side panel with (fastener remover/flathead). Repeat on other side. **\*\*Keep these as they will be reused later in install\*\***



## STEALTH FIGHTER REAR BUMPER

22+/TOYOTA TUNDRA

## REMOVAL

### STEP 4

Carefully release rear corner panels with (trim removal tool). (Repeat on other side) **\*\*Do not fully remove corner panels\*\***



## STEALTH FIGHTER REAR BUMPER

22+/TOYOTA TUNDRA

## REMOVAL

### STEP 5

Unplug blind spot sensors to free the harness. Depress the tab to unplug the sensor and remove the wire loom clip located on the arrow. (Repeat on other side)



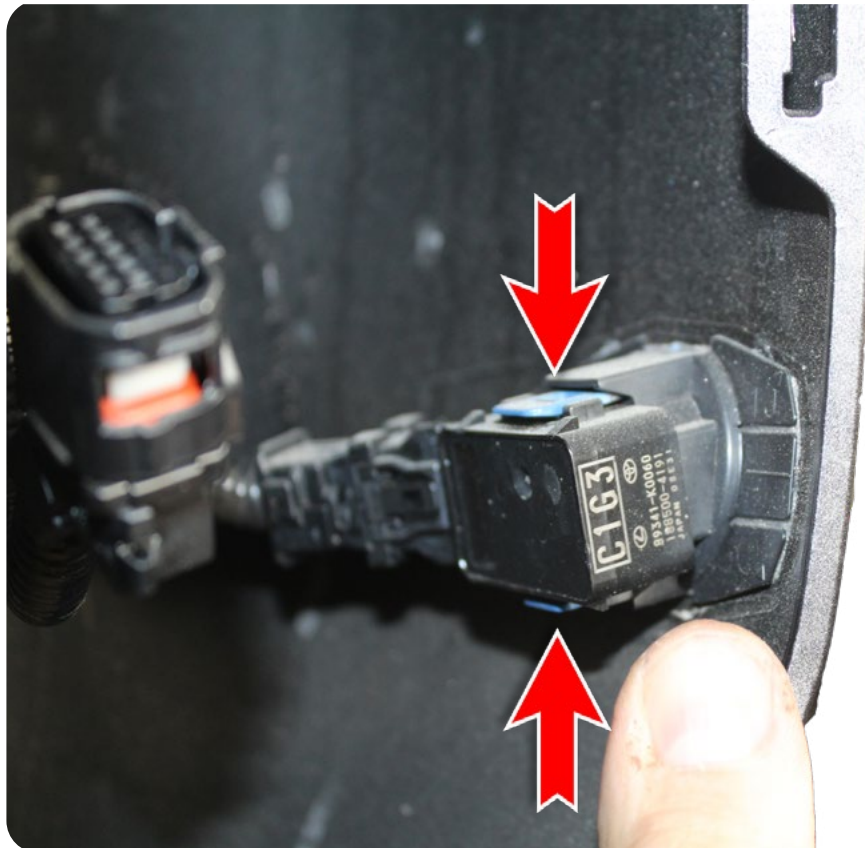
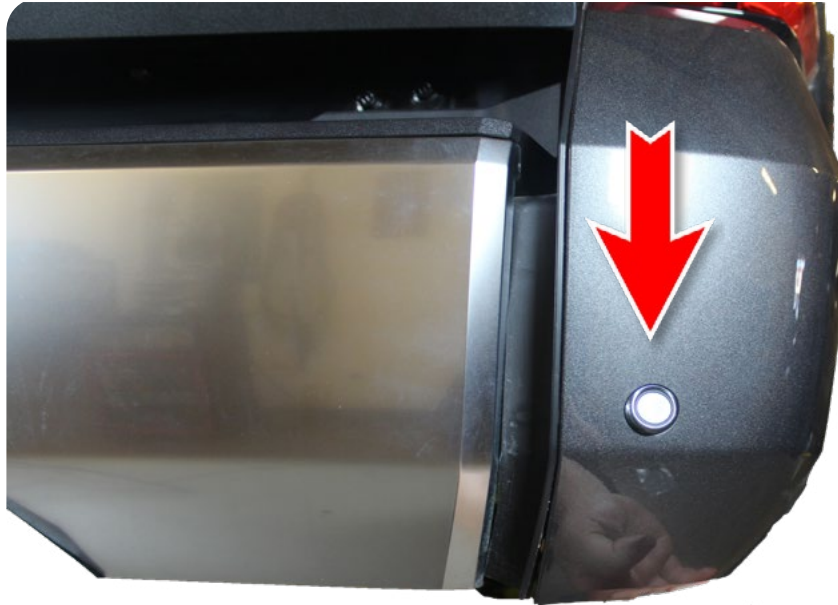
## STEALTH FIGHTER REAR BUMPER

22+/TOYOTA TUNDRA

## REMOVAL

### □ STEP 6

Release parking sensors from bezel. (Repeat on other side) **\*\*DO NOT pry tabs hard due to breakage\*\***



## STEALTH FIGHTER REAR BUMPER

22+/TOYOTA TUNDRA

## REMOVAL

### STEP 7

Remove the wire loom clip using (needle nose pliers) to free the harness from the body. (Repeat on other side)





## STEALTH FIGHTER REAR BUMPER

22+/TOYOTA TUNDRA

## REMOVAL

### □ STEP 8

Use a (7/8 wrench and 7/8 socket) to remove the hitch bolts. **\*\*This will release the hitch, be sure to have a second hand\*\*** **\*\*Keep OEM hardware as they will be reused later in install\*\***



## STEALTH FIGHTER REAR BUMPER

22+/TOYOTA TUNDRA

## REMOVAL

### STEP 9

Hitch and bumper will come off together.



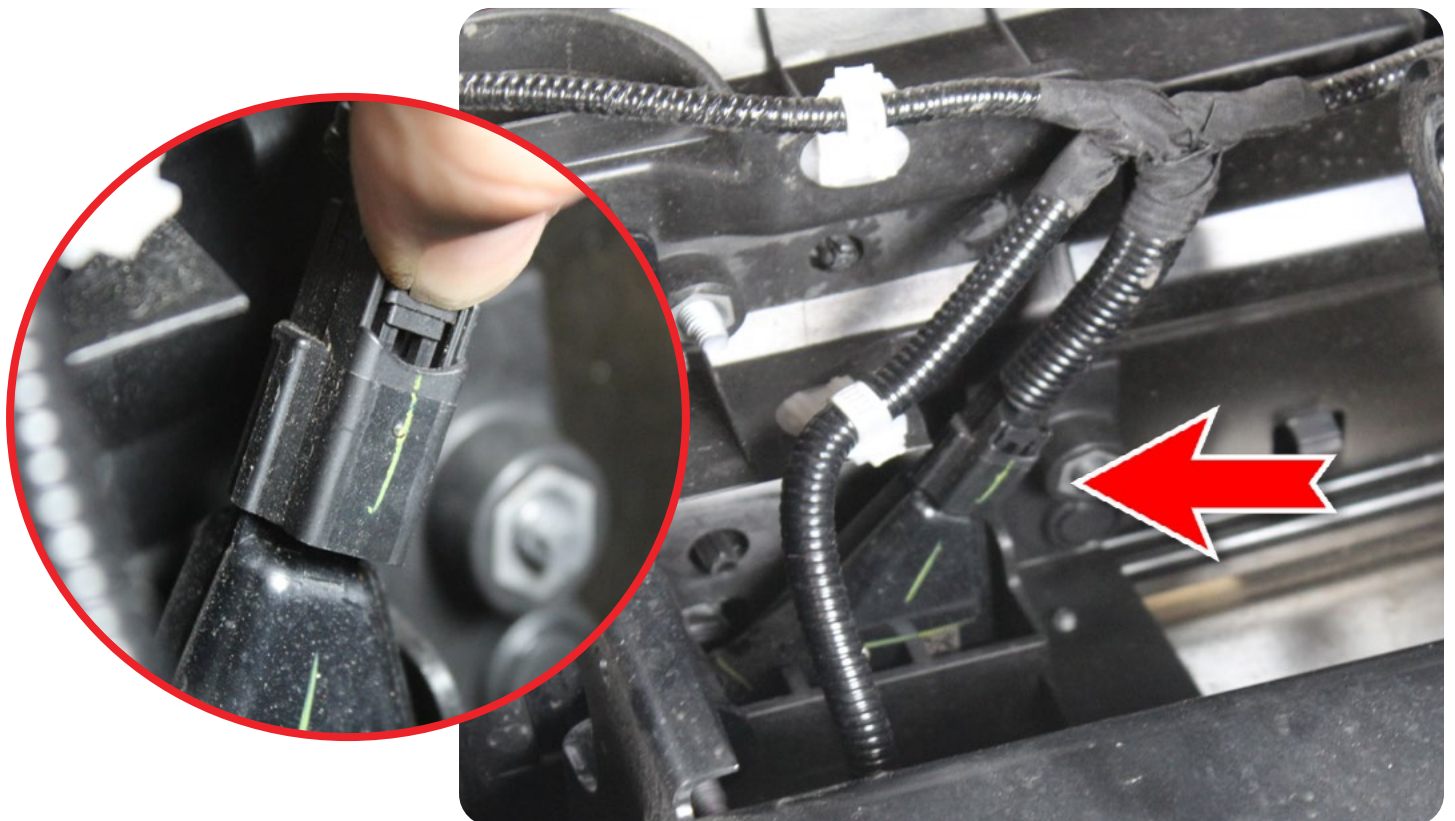
## STEALTH FIGHTER REAR BUMPER

22+/TOYOTA TUNDRA

## REMOVAL

STEP 10

Depress tab and pull to release license plate light plug.



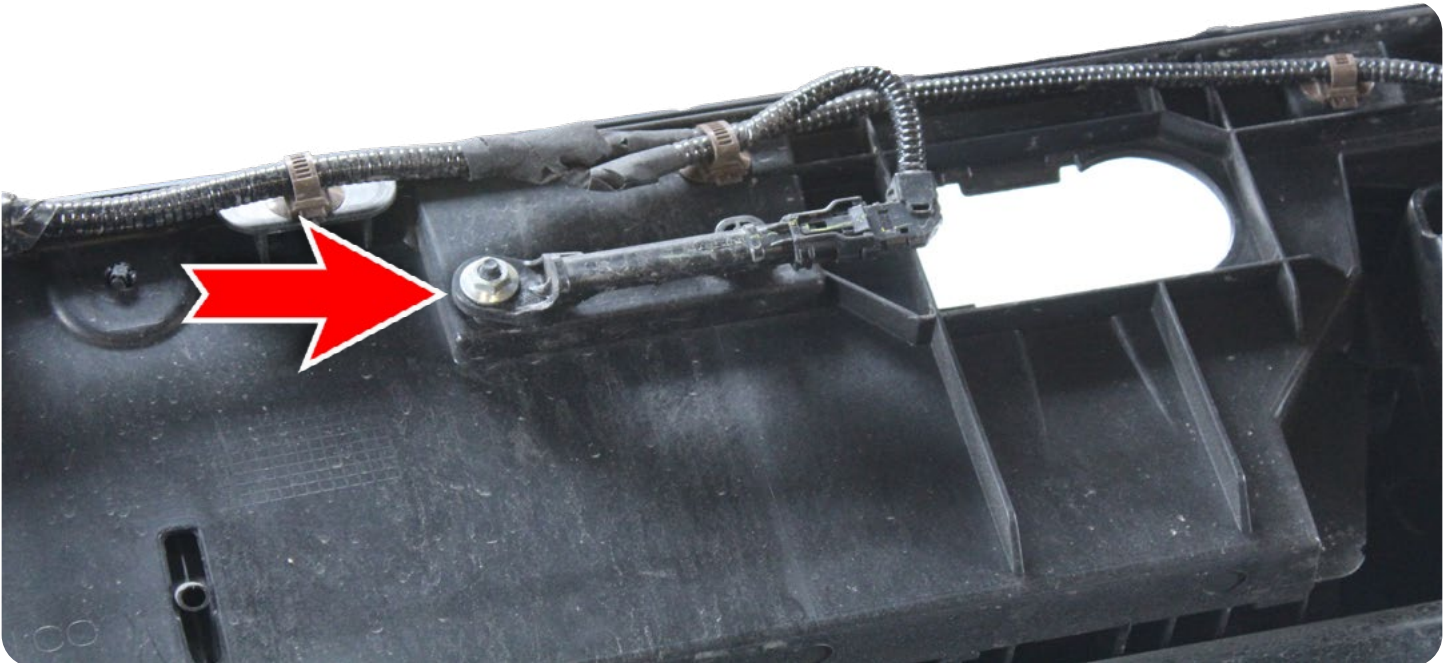
## STEALTH FIGHTER REAR BUMPER

22+/TOYOTA TUNDRA

## REMOVAL

### STEP 11

Using a (3/8 socket) remove the key less entry antenna.



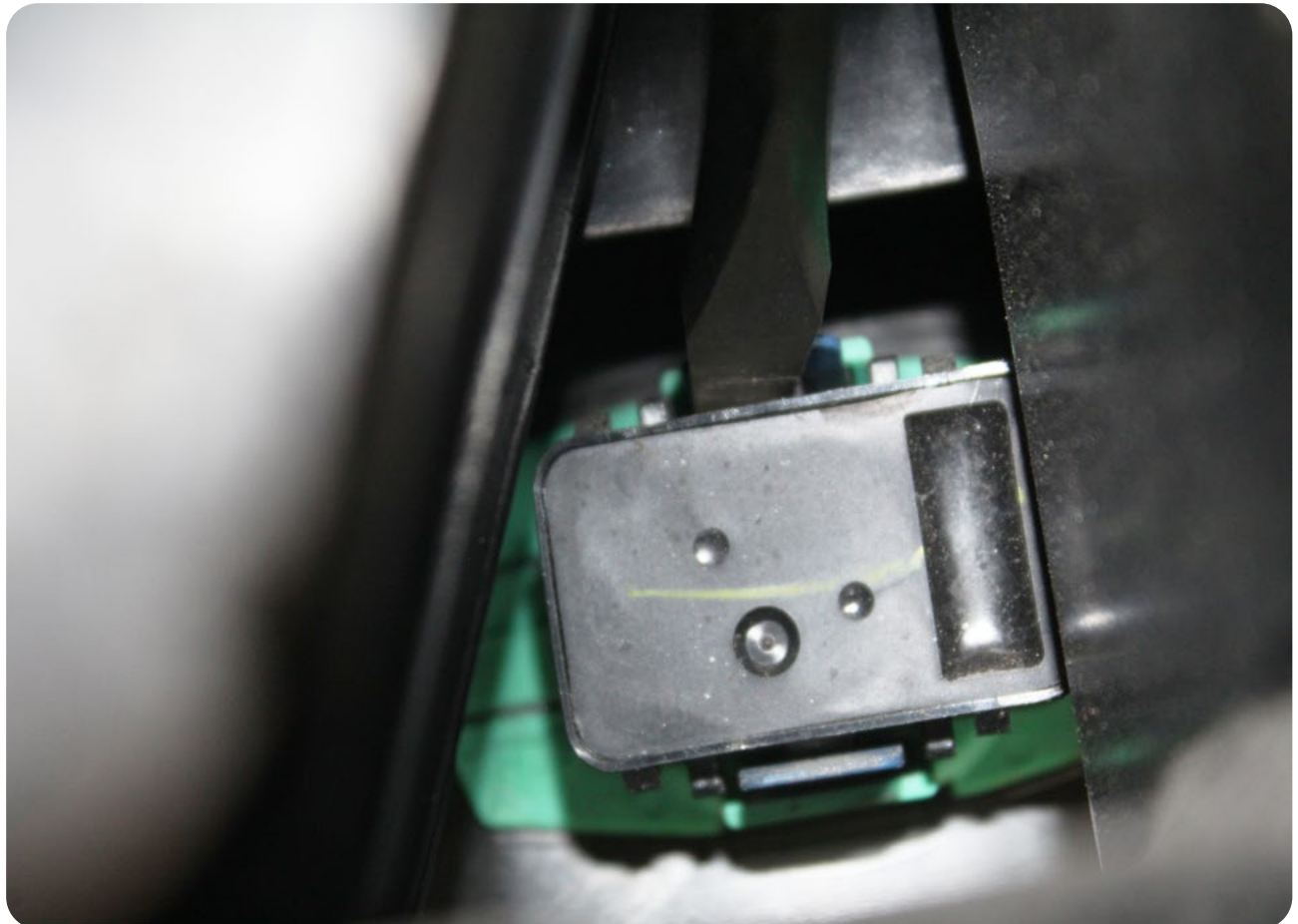
## STEALTH FIGHTER REAR BUMPER

22+/TOYOTA TUNDRA

## REMOVAL

### STEP 12

Release parking sensors from bezel. (Repeat on other side) **\*\*DO NOT pry tabs hard due to breakage\*\***





# INSTALLATION GUIDE

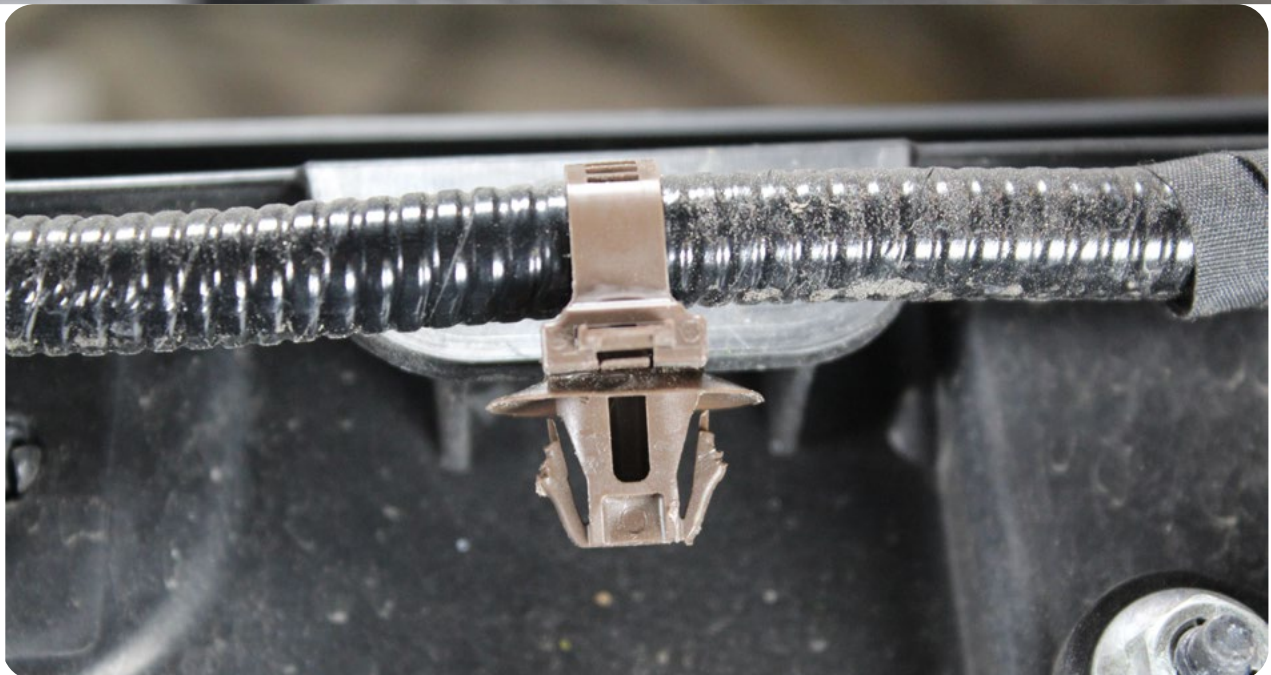
## STEALTH FIGHTER REAR BUMPER

22+/TOYOTA TUNDRA

## REMOVAL

### STEP 13

Remove all wiring loom clips with (needle nose pliers) from the stock bumper.



## STEALTH FIGHTER REAR BUMPER

22+/TOYOTA TUNDRA

## REMOVAL

### STEP 14

Set wiring harness aside. **\*\*Remember the orientation of the harness for this will be important for install\*\***



**PASSENGER**



**DRIVER**

## STEALTH FIGHTER REAR BUMPER

22+/TOYOTA TUNDRA

## REMOVAL

### □ STEP 15

Using your (trim removal tool) remove plastic caps on both sides.

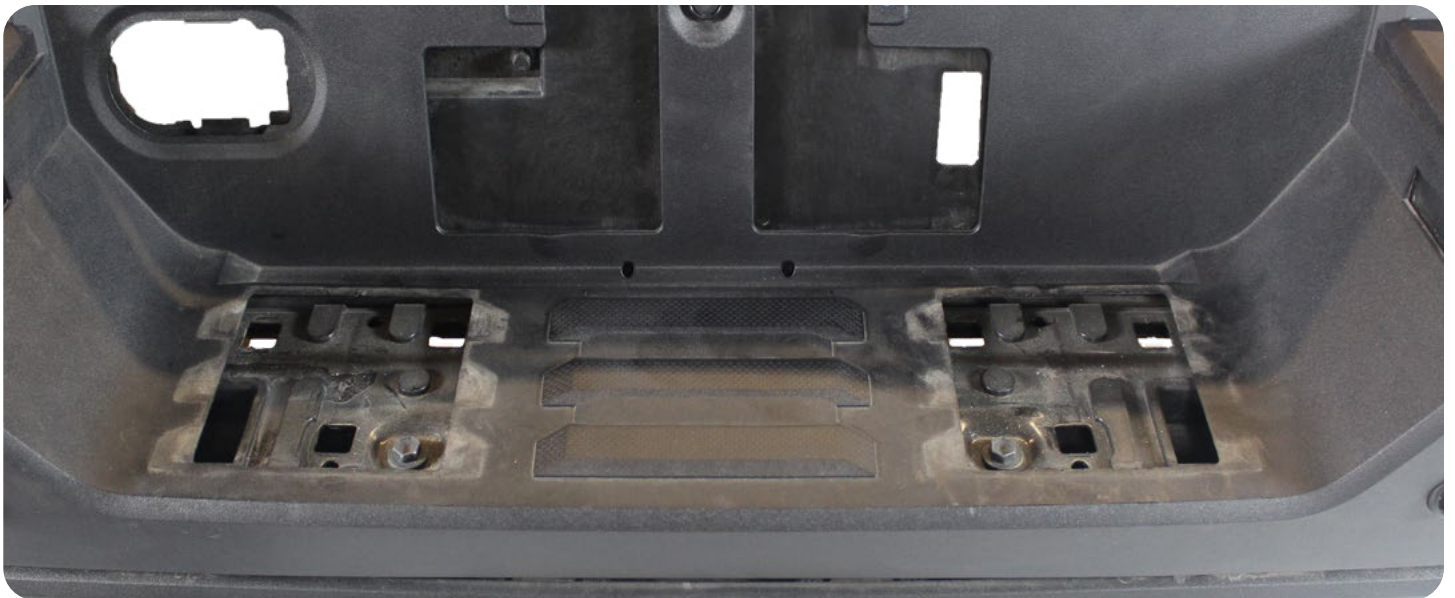




## STEALTH FIGHTER REAR BUMPER

22+/TOYOTA TUNDRA

## REMOVAL



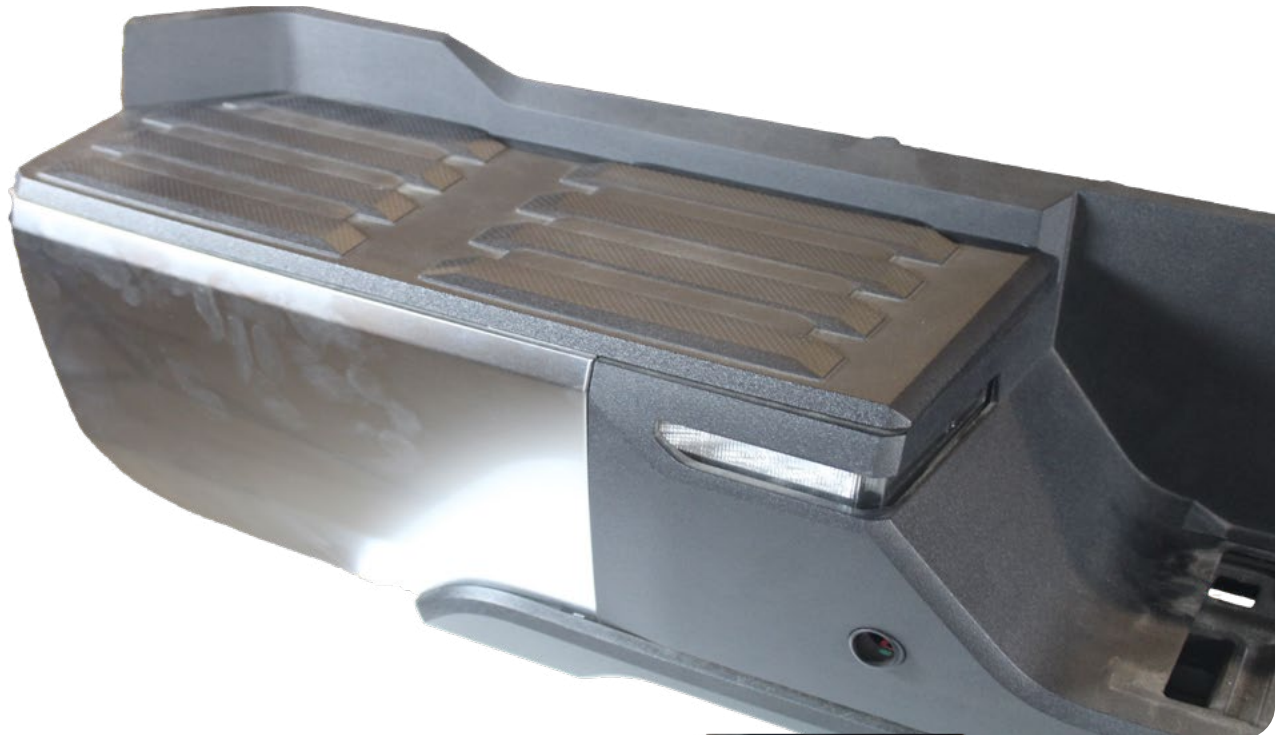
## STEALTH FIGHTER REAR BUMPER

22+/TOYOTA TUNDRA

## REMOVAL

### STEP 16

Remove top plastic panels by using a (fastener remover/flathead). (repeat on other side)



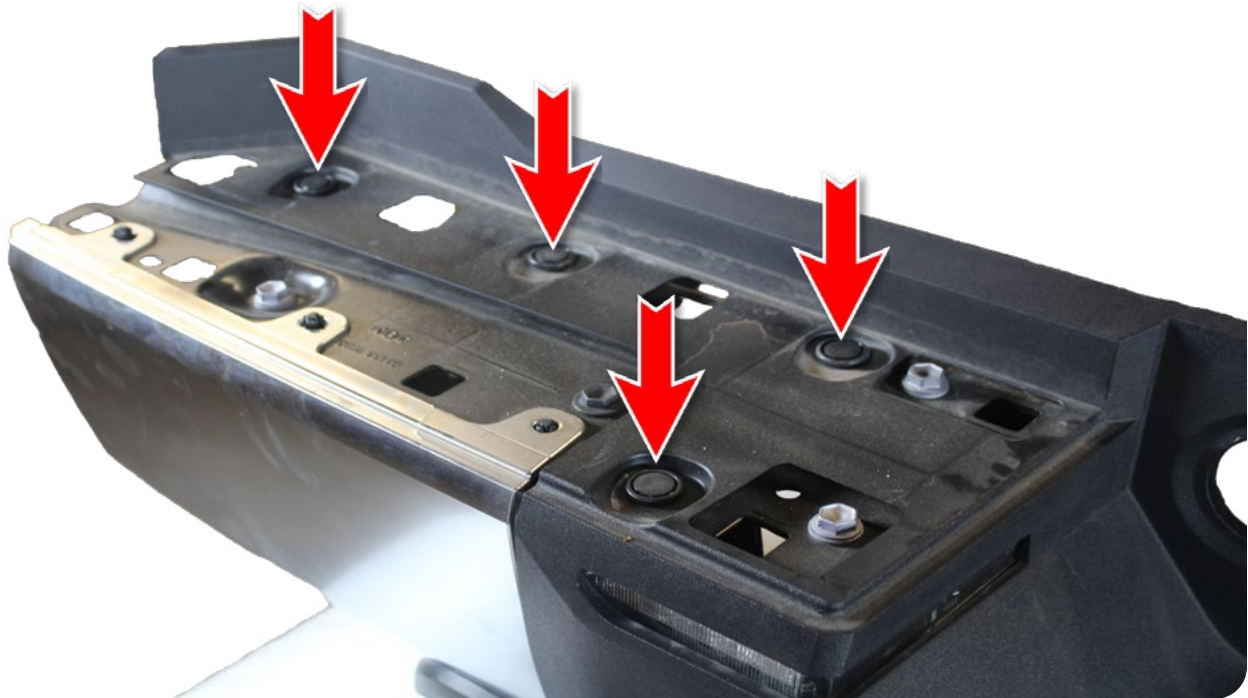
## STEALTH FIGHTER REAR BUMPER

22+/TOYOTA TUNDRA

## REMOVAL

### □ STEP 17

Use your (fastener remover/flathead) to remove retainer clips. (Repeat on other side)





# INSTALLATION GUIDE

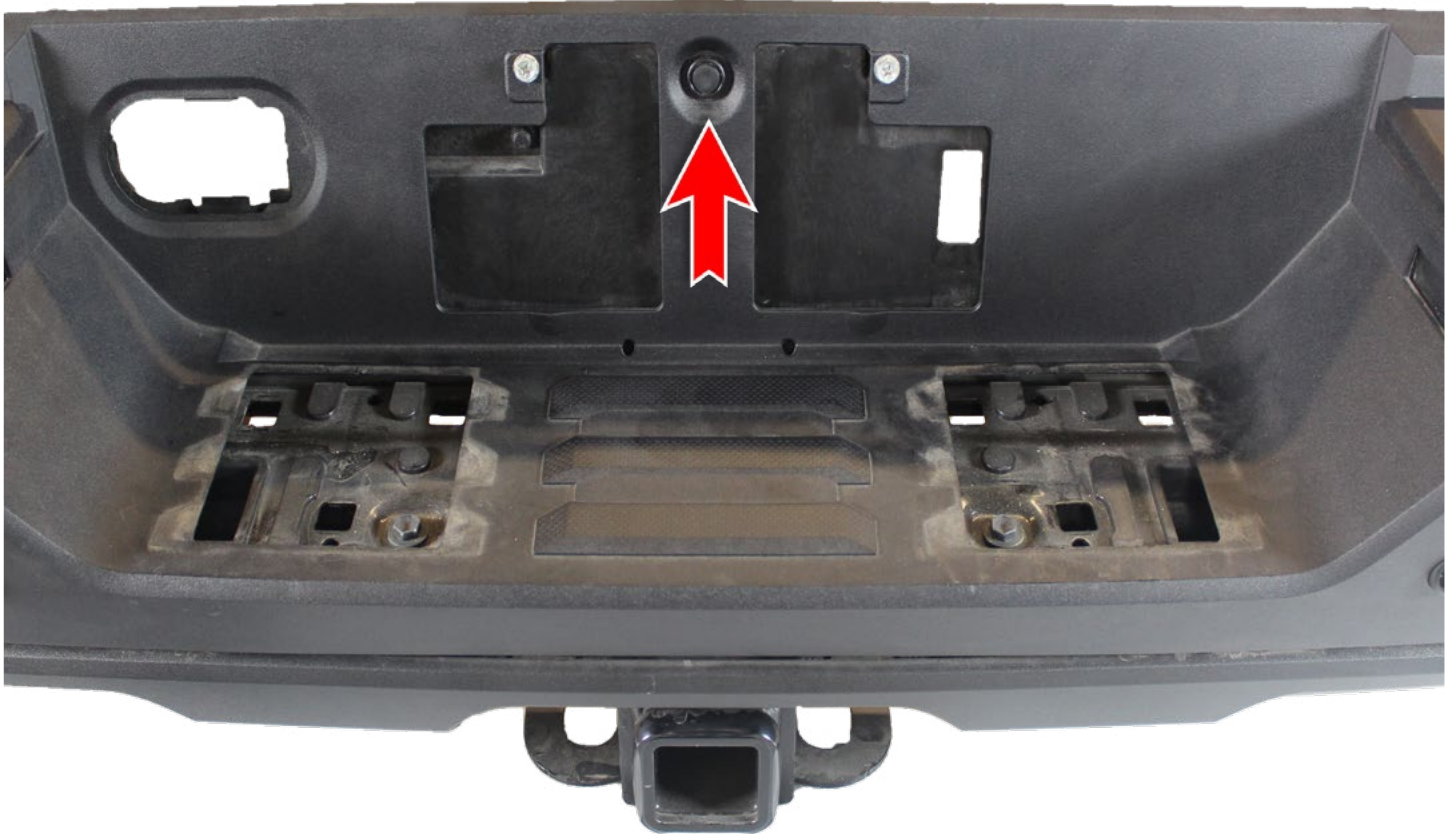
## STEALTH FIGHTER REAR BUMPER

22+/TOYOTA TUNDRA

## REMOVAL

### STEP 18

Remove retainer clip with (fastener remover/flathead screwdriver).



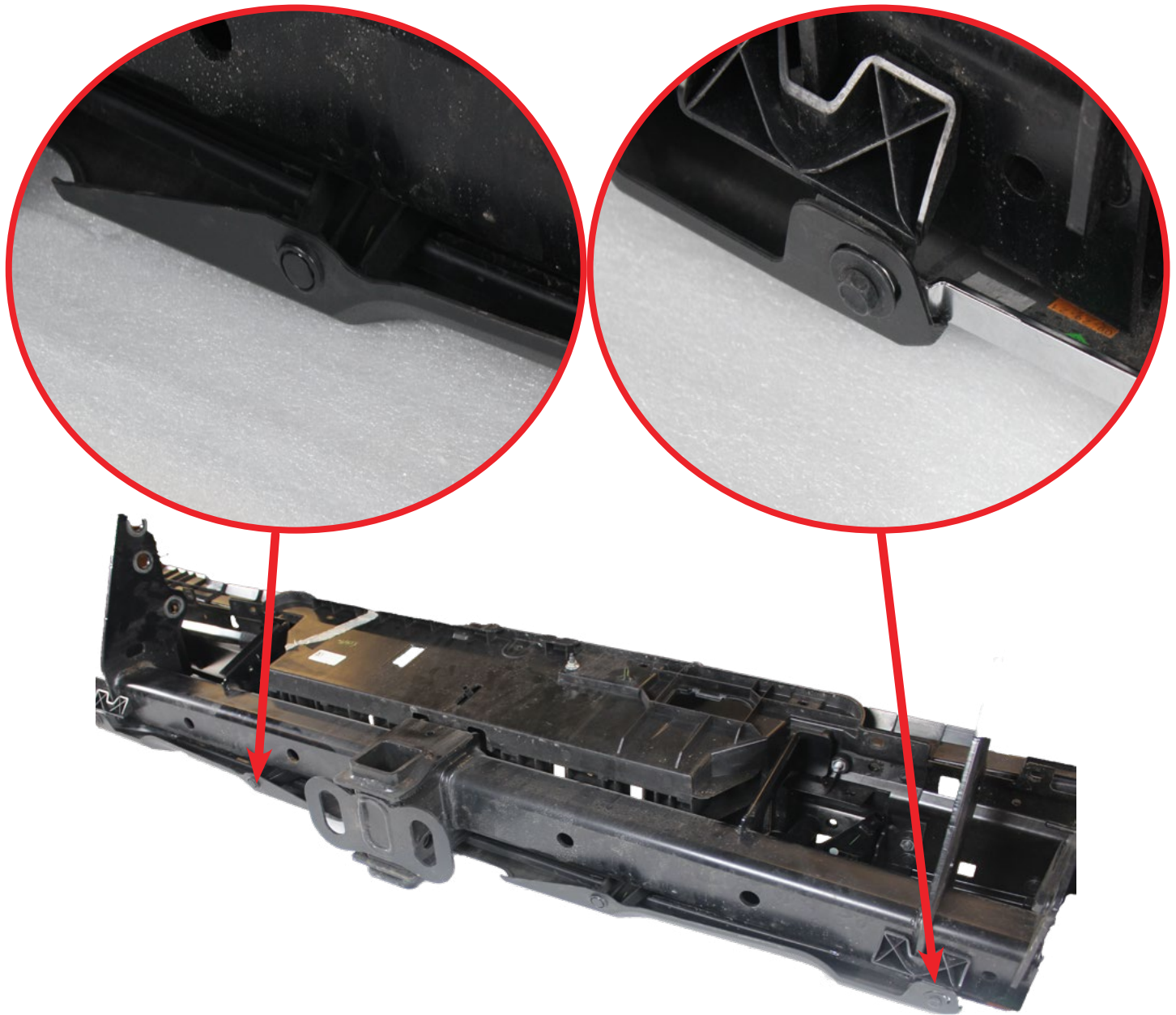
## STEALTH FIGHTER REAR BUMPER

22+/TOYOTA TUNDRA

## REMOVAL

### □ STEP 19

Remove retainer clips with (fastener remover/flathead screwdriver) and use a (5/16 socket) to remove bolts from the bottom of the hitch.



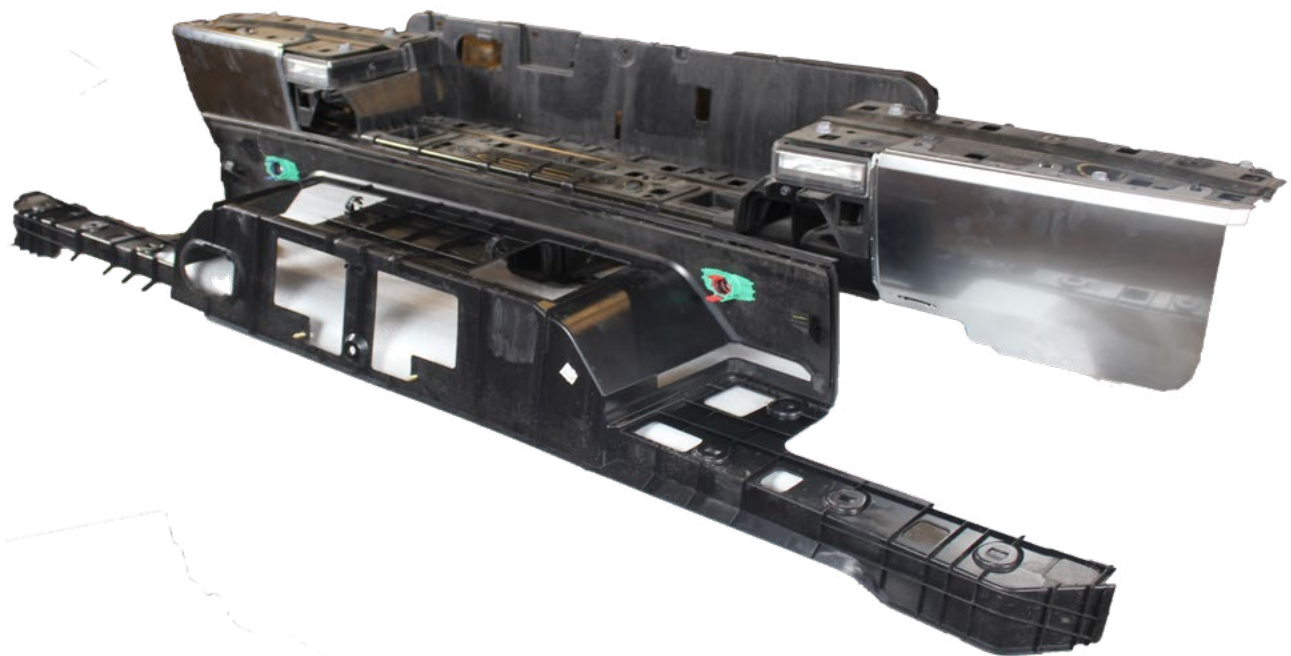
## STEALTH FIGHTER REAR BUMPER

22+/TOYOTA TUNDRA

## REMOVAL

### STEP 20

You can now completely remove top plastic from the hitch.



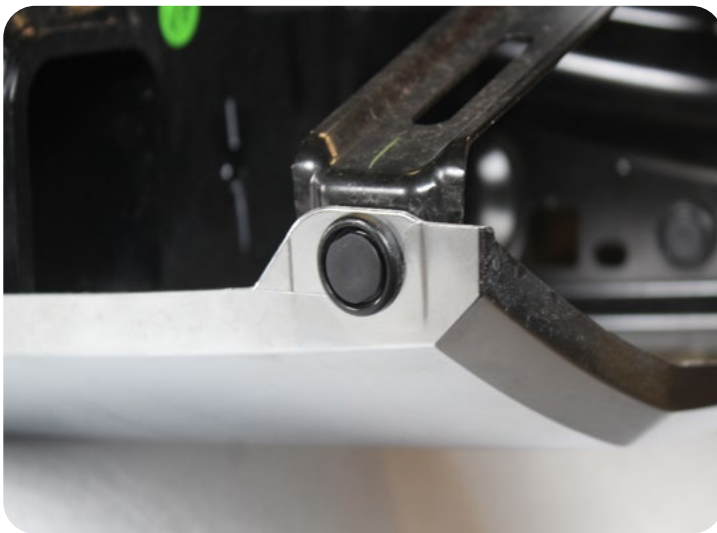
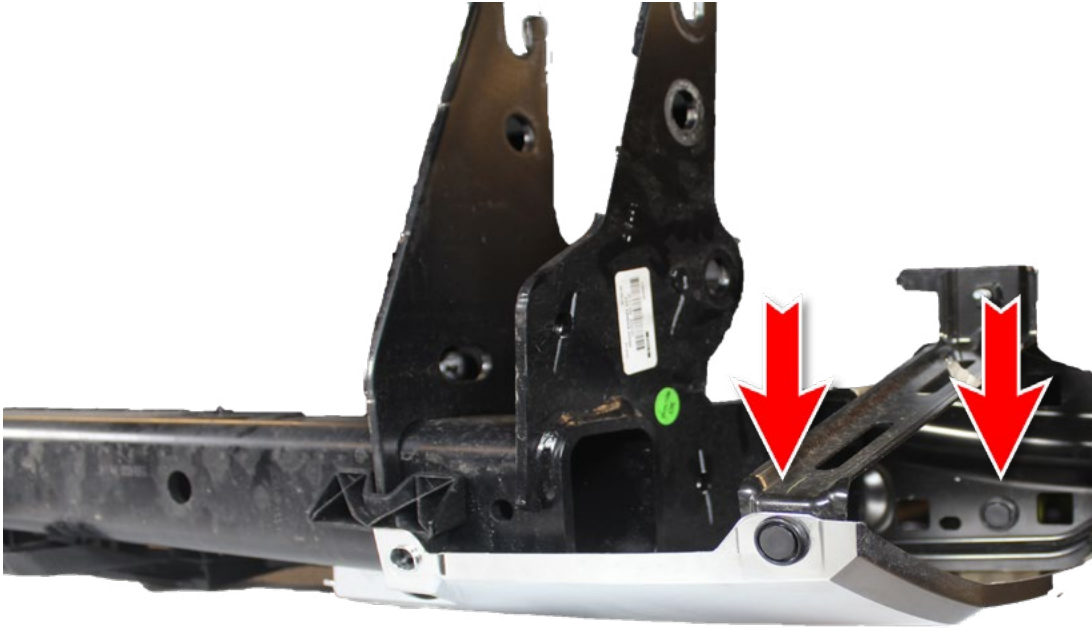
## STEALTH FIGHTER REAR BUMPER

22+/TOYOTA TUNDRA

## REMOVAL

### □ STEP 21

Use your (fastener remover/flathead screwdriver) to remove the retainer clips from underneath bumper. (Repeat on other side)



## STEALTH FIGHTER REAR BUMPER

22+/TOYOTA TUNDRA

## REMOVAL

### STEP 22

Use a (1/2 socket) to remove the bolts on top and middle of the bumper to release plastic from hitch.





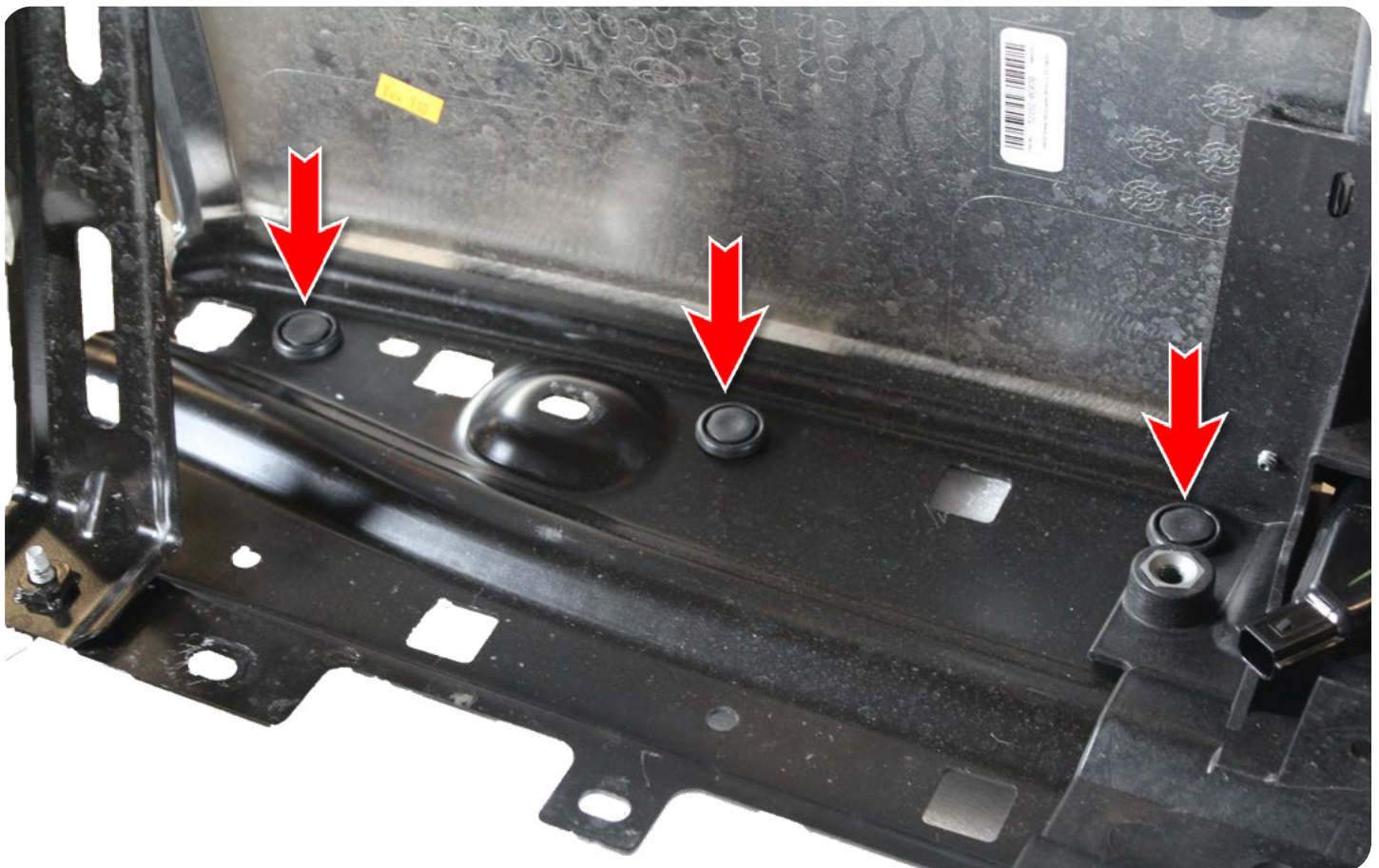
## STEALTH FIGHTER REAR BUMPER

22+/TOYOTA TUNDRA

## REMOVAL

### STEP 23

Remove the retaining clips using a (fastener remover/flathead screwdriver) from underneath the bumper.



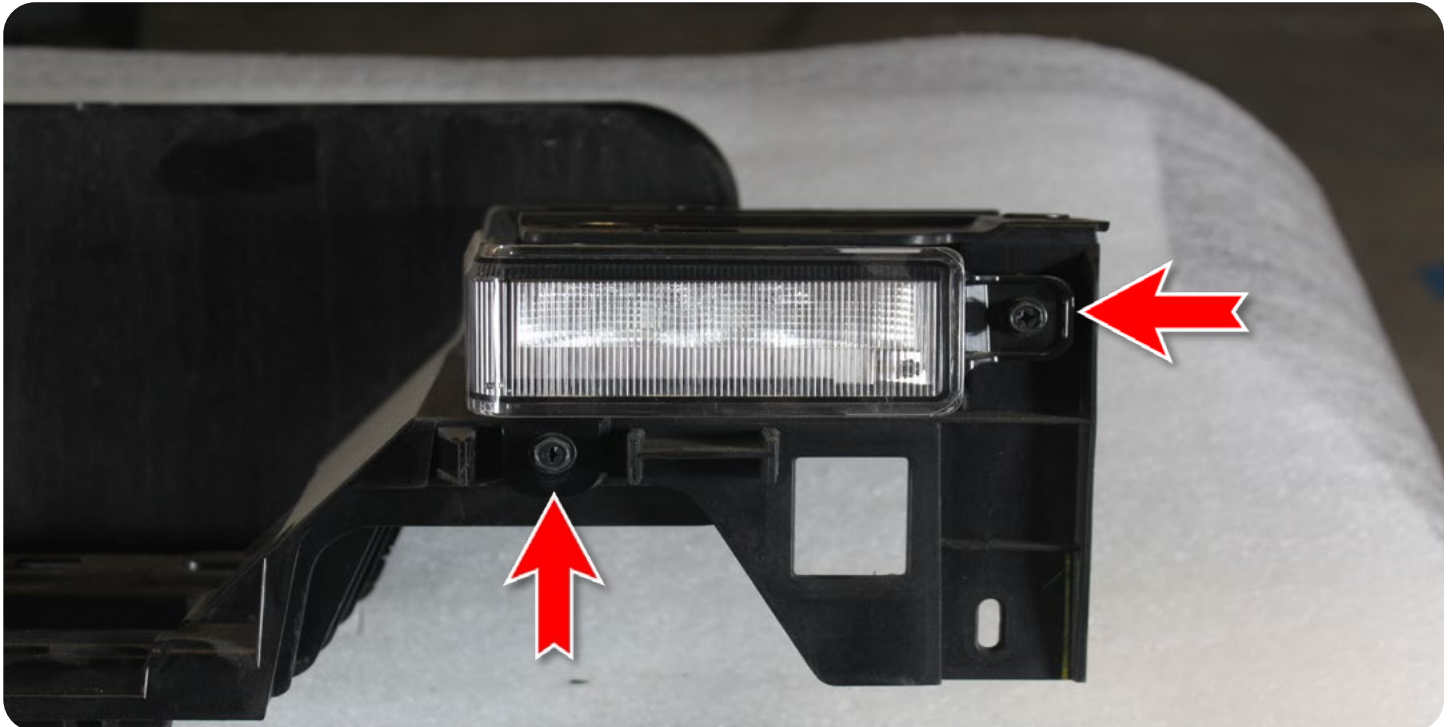
## STEALTH FIGHTER REAR BUMPER

22+/TOYOTA TUNDRA

## REMOVAL

### □ STEP 24

Using a (8mm socket/Philips head screwdriver) remove the screws for license plate light. (Repeat on other side)





# INSTALLATION GUIDE

## STEALTH FIGHTER REAR BUMPER

22+/TOYOTA TUNDRA

## INSTALLATION

### □ STEP 25

Install the provided 1/4 x 1" bolt and nylon lock nut for license plate light using a (7/16 socket and 5mm allen wrench). The nut will be used as a spacer. (Repeat on other side)



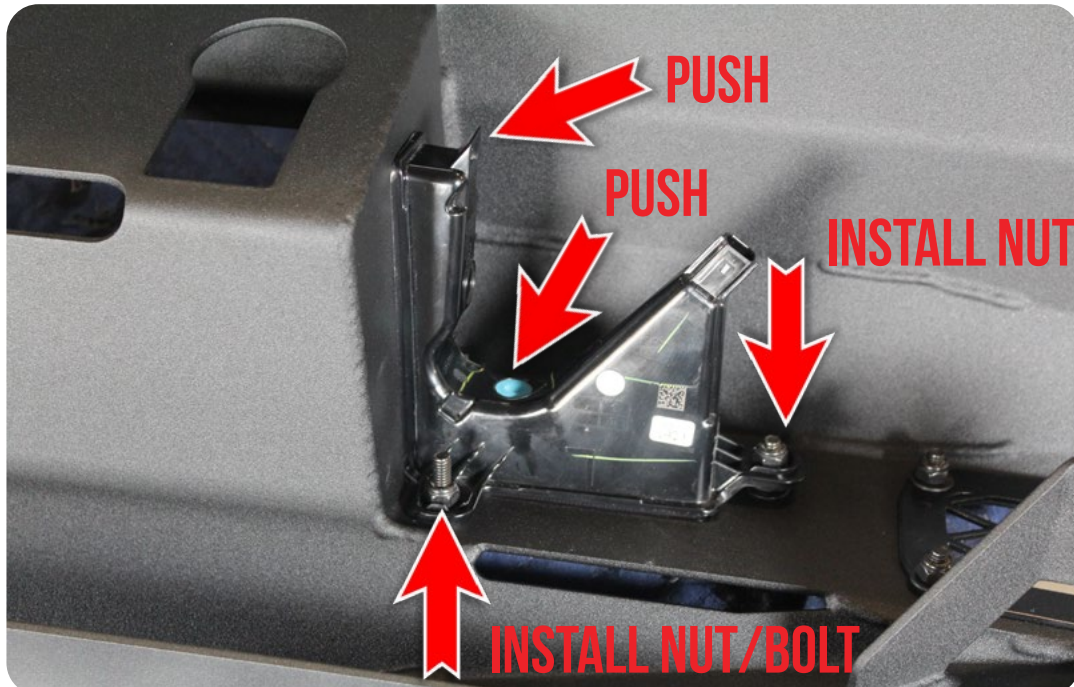
## STEALTH FIGHTER REAR BUMPER

22+/TOYOTA TUNDRA

## INSTALLATION

### STEP 26

Install the license plate light by first putting it on with the bolt from step 24, then you can pop the light in. **\*\*Push the top until you hear it click otherwise its not fully installed\*\*** Next install 1/4" nylon lock nut on **number 1**, and 1/4 x 1" bolt and nylon lock nut for **number 2** using a (7/16 socket and 5mm allen wrench). (Repeat on other side)



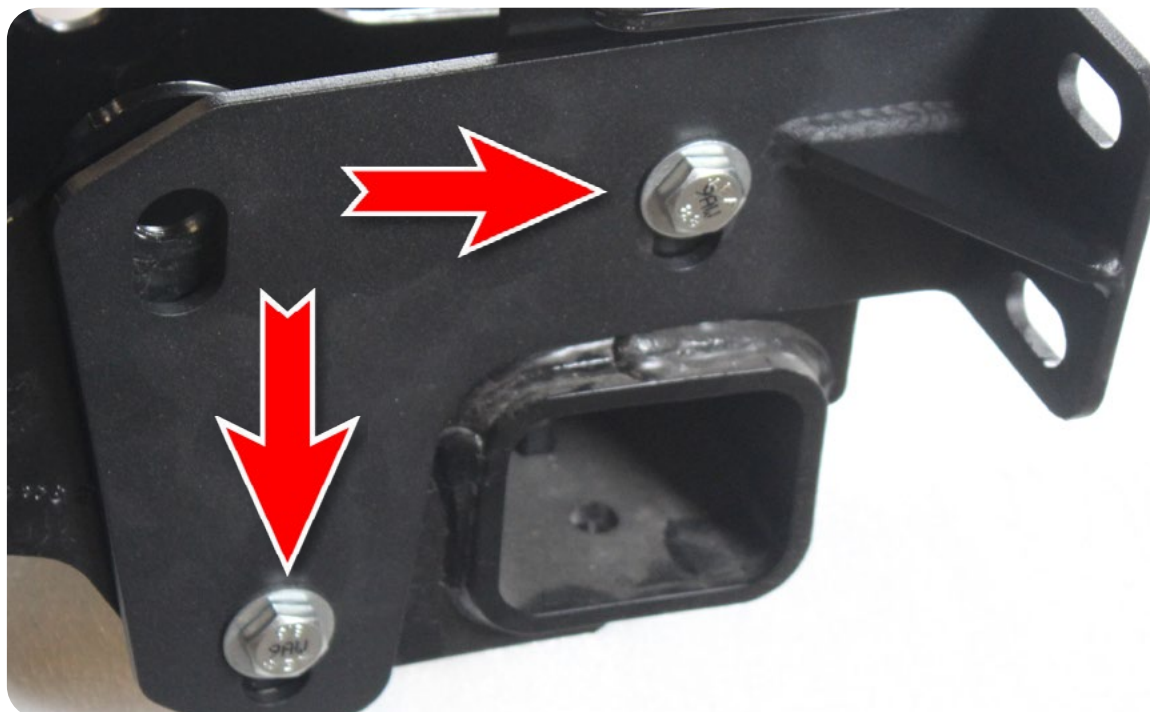
## STEALTH FIGHTER REAR BUMPER

22+/TOYOTA TUNDRA

## INSTALLATION

### □ STEP 27

Install bumper mounts to the hitch. Driver side will have welded nuts so use the provided M10-1.25 x 35mm bolts use a (9/16 socket) to install. Use a (9/16 socket) to install provided 3/8"-16 bolts, washers, and nylon lock nuts on passenger. **\*\*Leave loose for adjustment on the bumper when installed\*\***



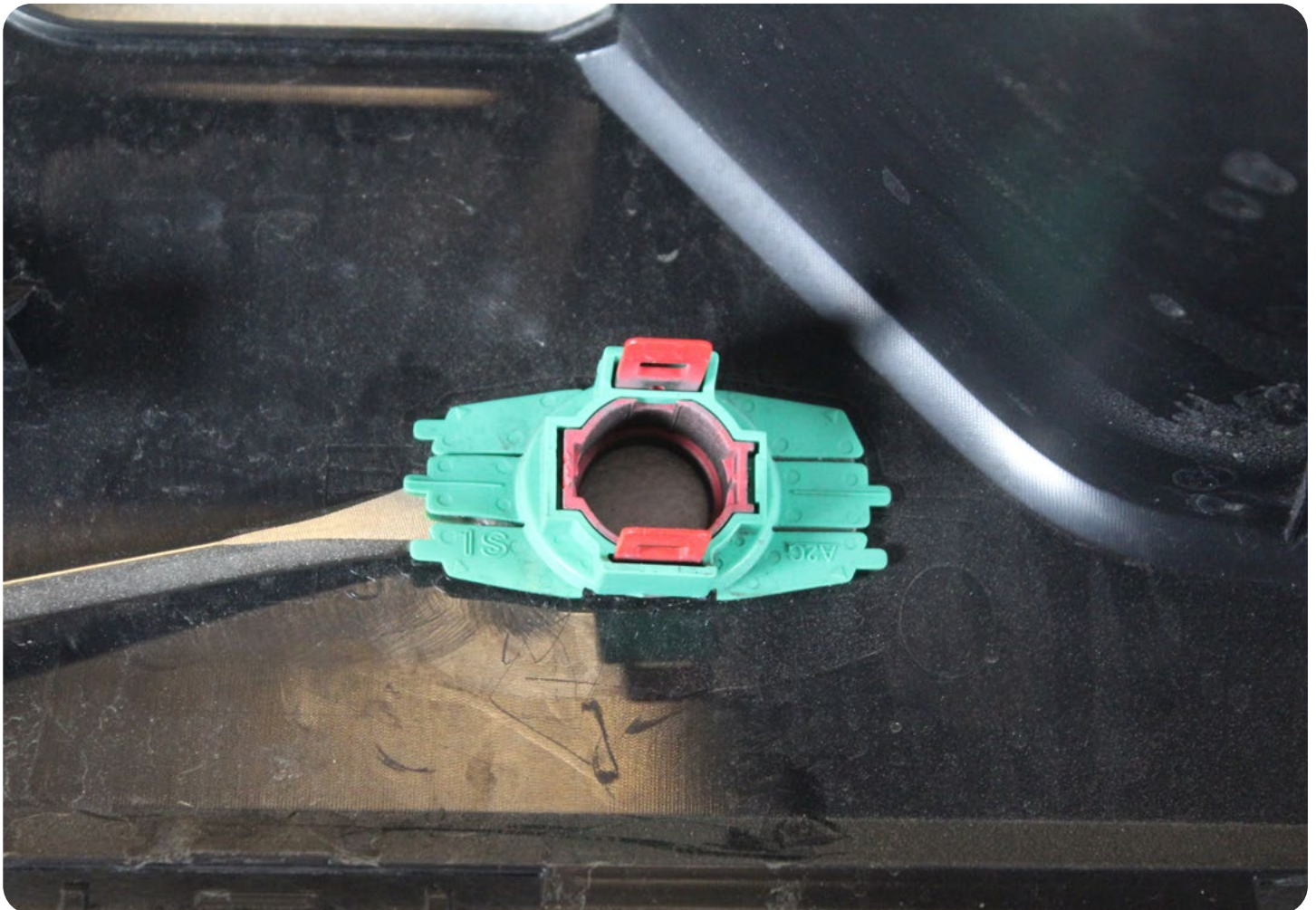
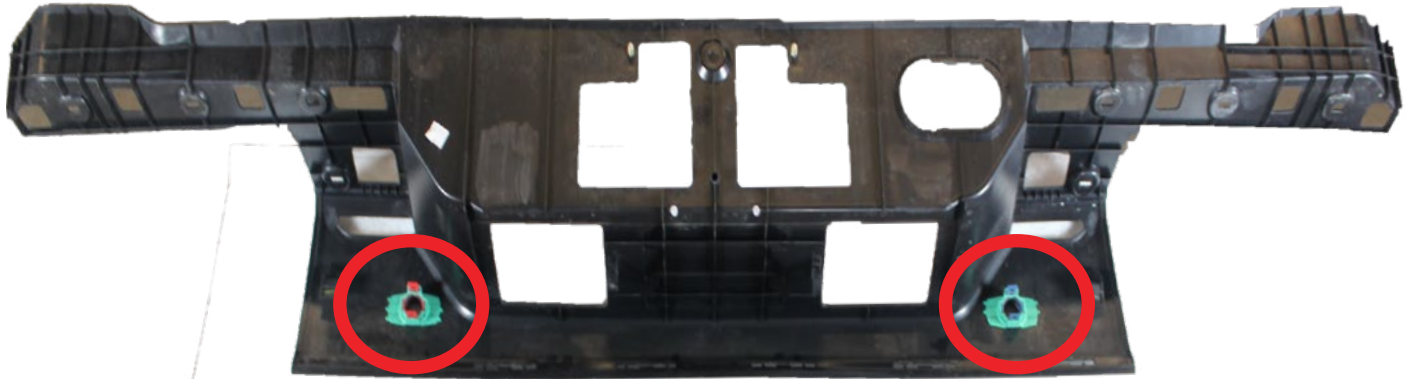
## STEALTH FIGHTER REAR BUMPER

22+/TOYOTA TUNDRA

## INSTALLATION

### □ STEP 28

Using a (flathead screwdriver) remove the sensor bezels. **\*\*Be careful not to break tabs on top\*\***



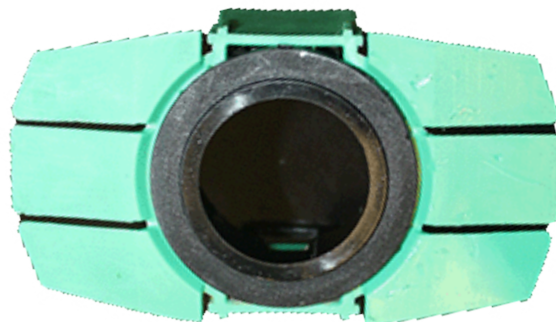
## STEALTH FIGHTER REAR BUMPER

22+/TOYOTA TUNDRA

## INSTALLATION

### STEP 29

Remove double sided tape from the bezel until the surface is clear of residue.



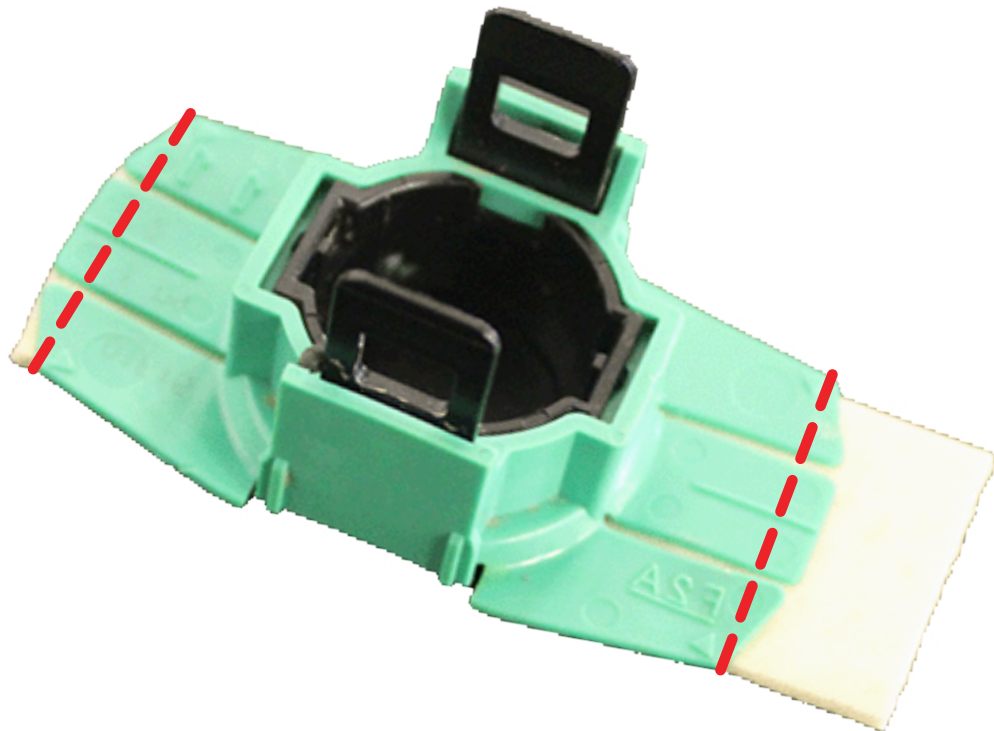
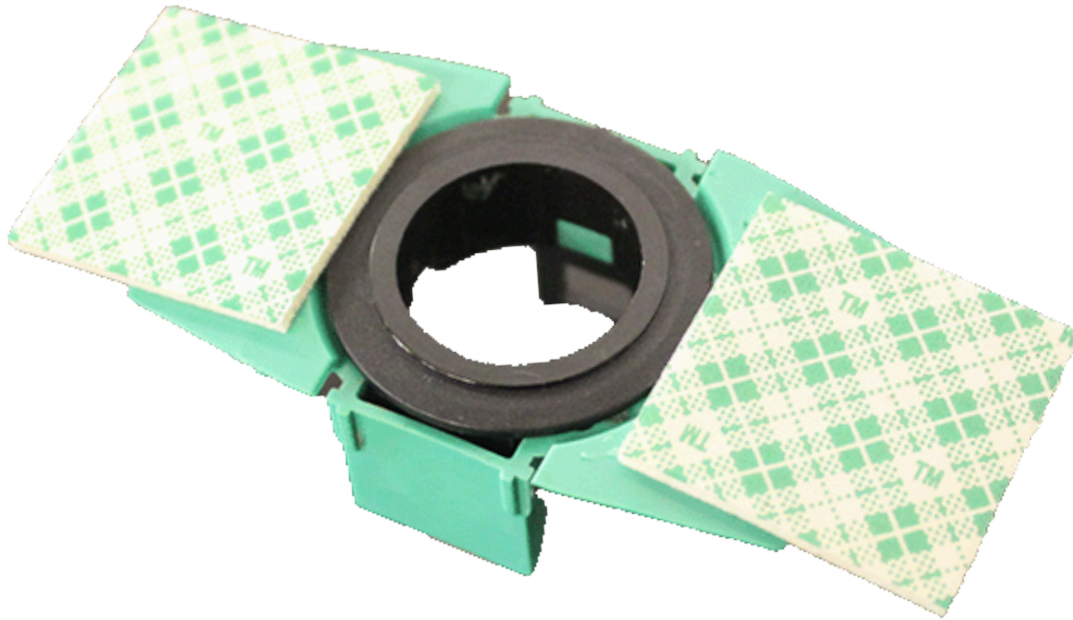
## STEALTH FIGHTER REAR BUMPER

22+/TOYOTA TUNDRA

## INSTALLATION

### □ STEP 30

Install 3m double sided tape to each side of the bezel wings and trim excess with a (razor blade).





## STEALTH FIGHTER REAR BUMPER

22+/TOYOTA TUNDRA

## INSTALLATION

### □ STEP 31

Bend tabs on hitch with a (adjustable wrench) toward the **outside** of the hitch. (Repeat on other side)



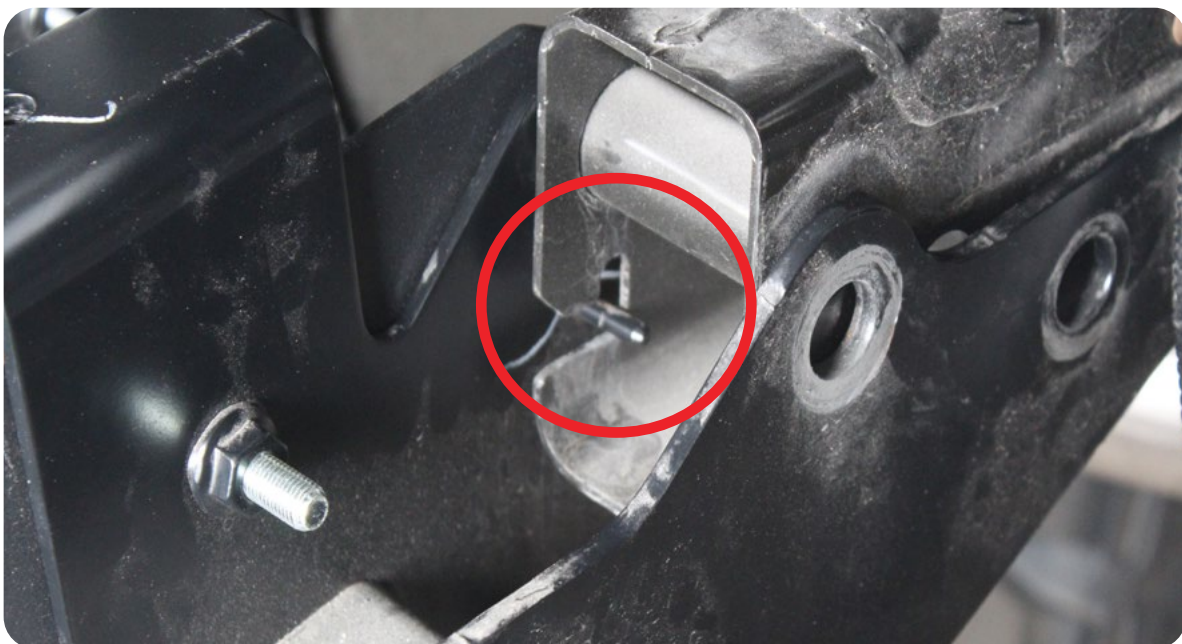
## STEALTH FIGHTER REAR BUMPER

22+/TOYOTA TUNDRA

## INSTALLATION

### STEP 32

Install hitch. Use pins on hitch to line up correctly.



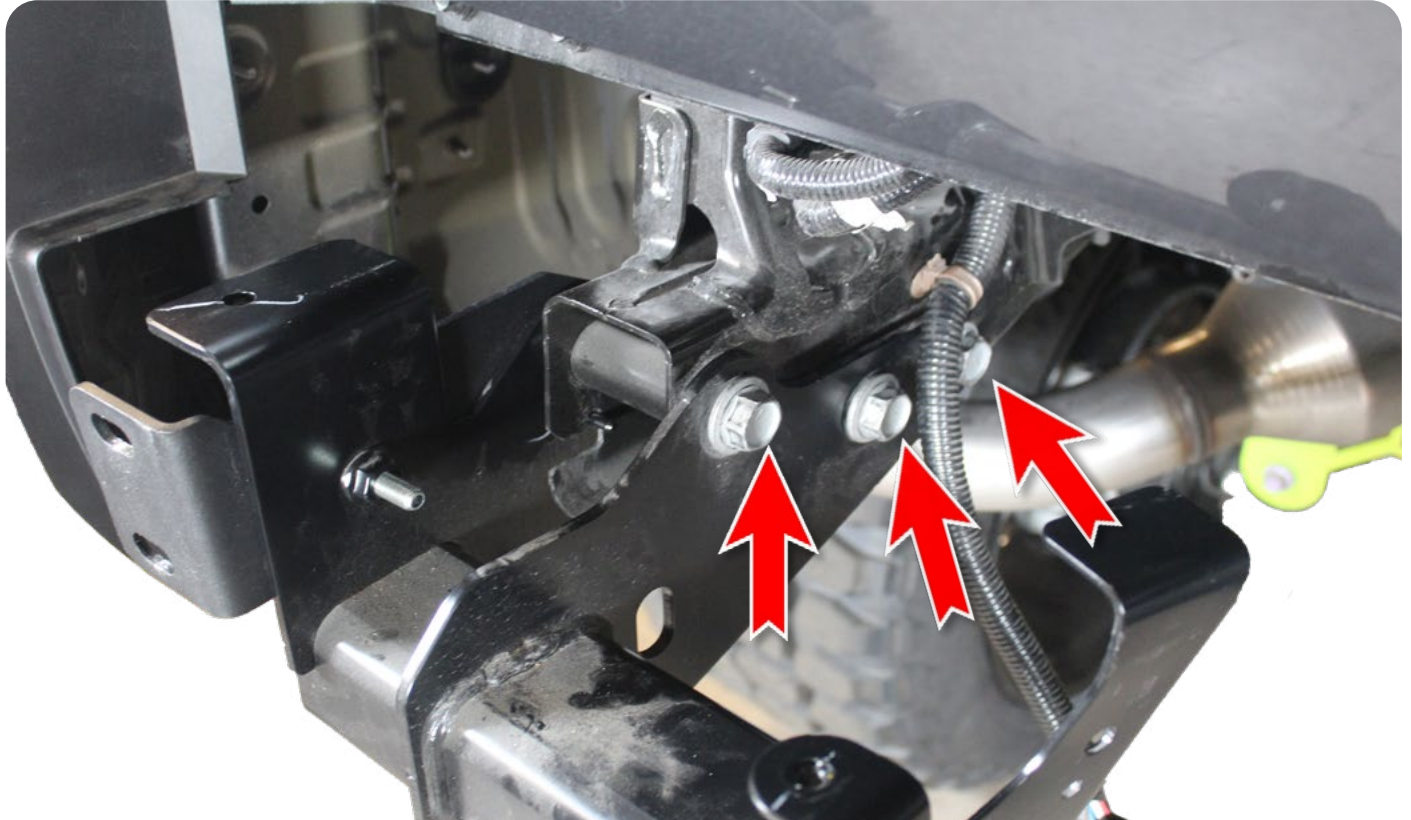
## STEALTH FIGHTER REAR BUMPER

22+/TOYOTA TUNDRA

## INSTALLATION

### □ STEP 33

Using a (7/8 wrench and socket), install OEM hitch hardware that was removed in **step 8**. Follow the orientation provided in pictures. Ensure that the washer is on the side you install the nuts. (Repeat on other side)



## STEALTH FIGHTER REAR BUMPER

22+/TOYOTA TUNDRA

## INSTALLATION

### □ STEP 34

Install trailer plug and pry out the tabs to securely seat plug (flathead screwdriver).



## STEALTH FIGHTER REAR BUMPER

22+/TOYOTA TUNDRA

## INSTALLATION

### STEP 35

Use pictures below to use as a reference on how the harness needs to be installed on your Stealth Fighter™. **\*\*orientation for the sensors are important, ensure the plug in is facing toward the outside of the bumper\*\***



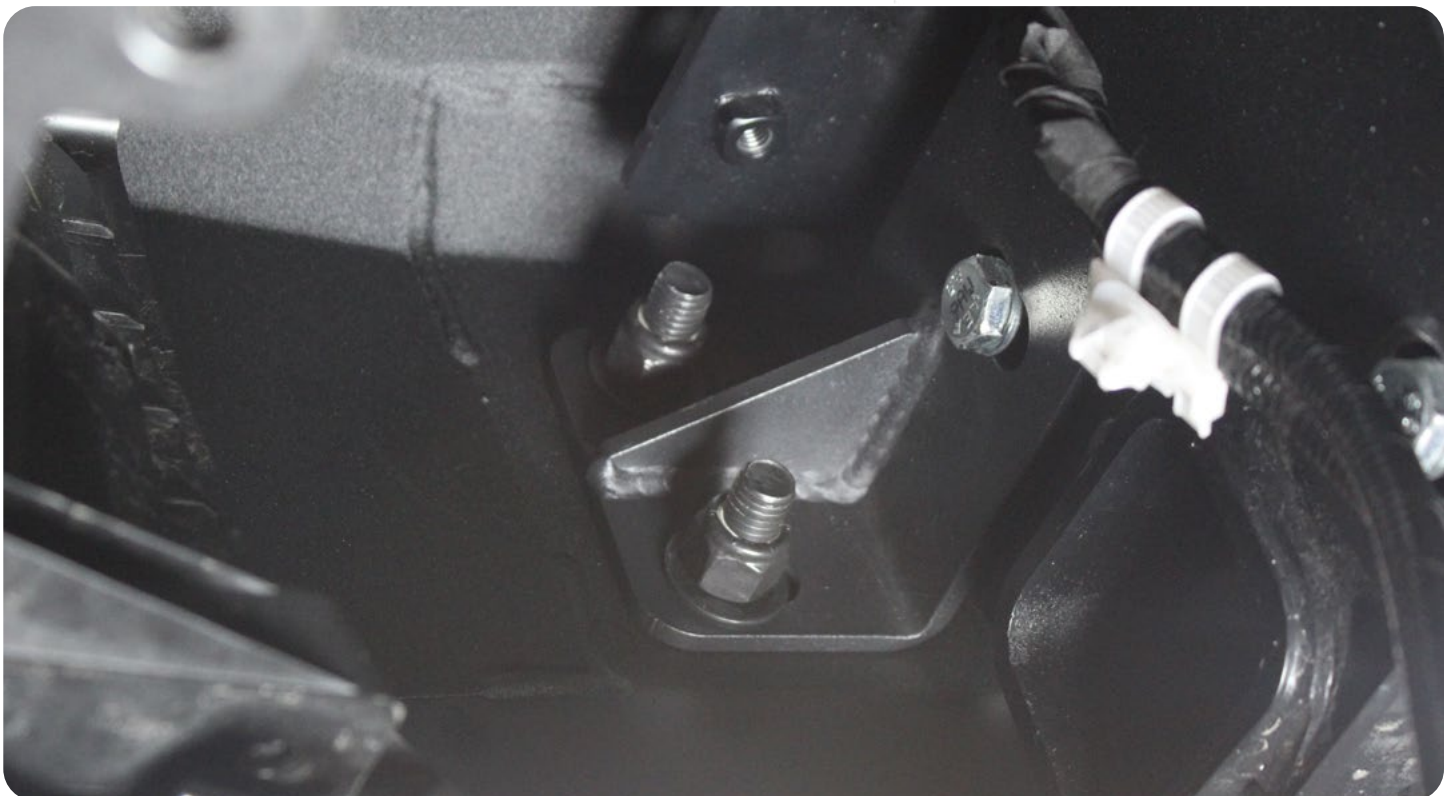
## STEALTH FIGHTER REAR BUMPER

22+/TOYOTA TUNDRA

## INSTALLATION

### □ STEP 36

Using a (8mm Allen wrench, and 3/4 wrench) install the provided black 1/2"-13 bolts, nylon lock nuts, and washers to the mounts you installed on the hitch. Install washers on backside.



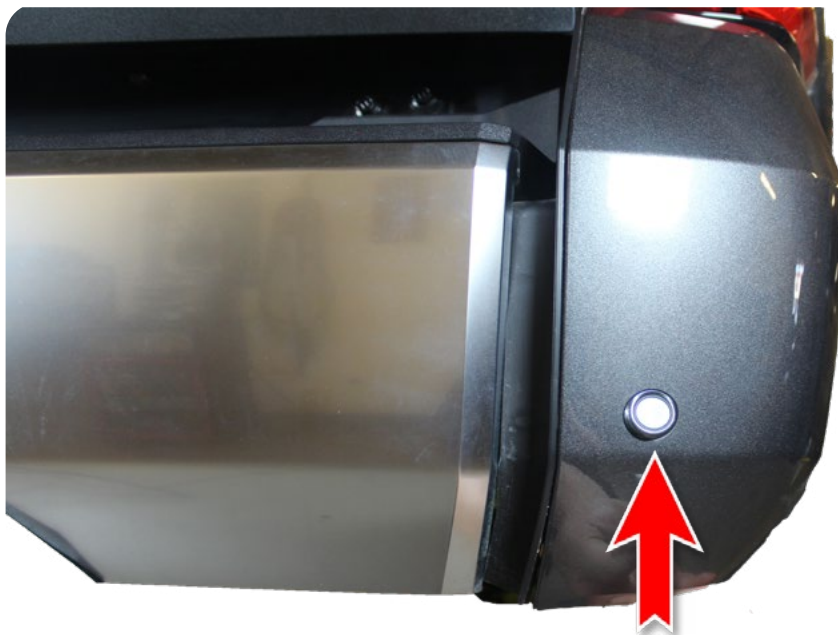
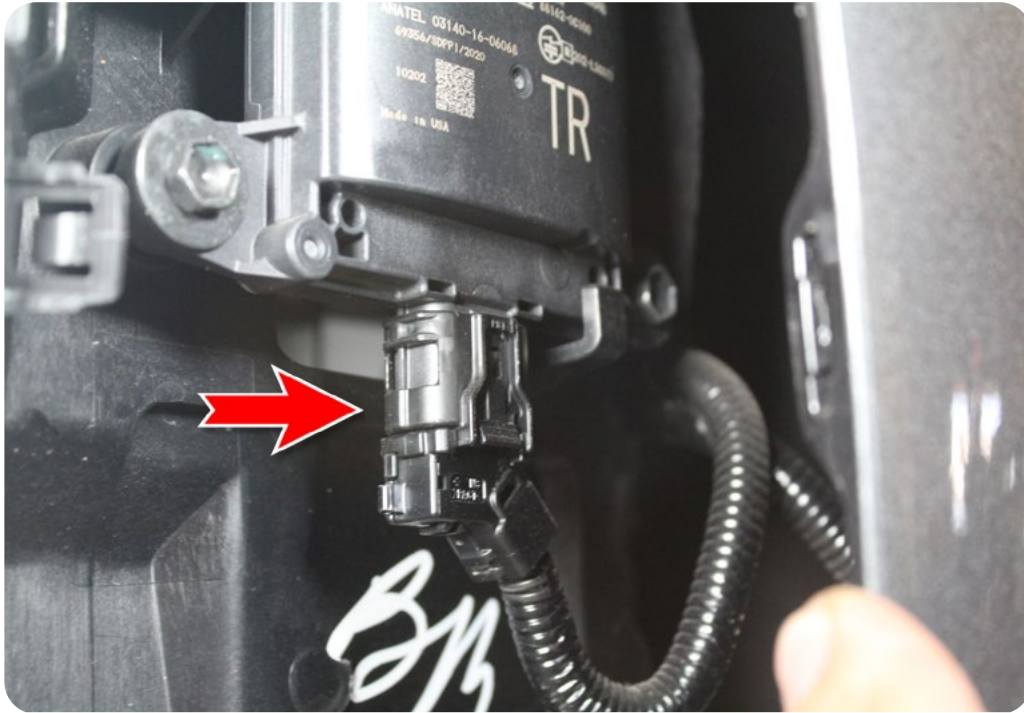
## STEALTH FIGHTER REAR BUMPER

22+/TOYOTA TUNDRA

## INSTALLATION

### □ STEP 37

Plug the blind spot sensor and your parking sensor back in and clip side panel back in and install your push pins from step 3.



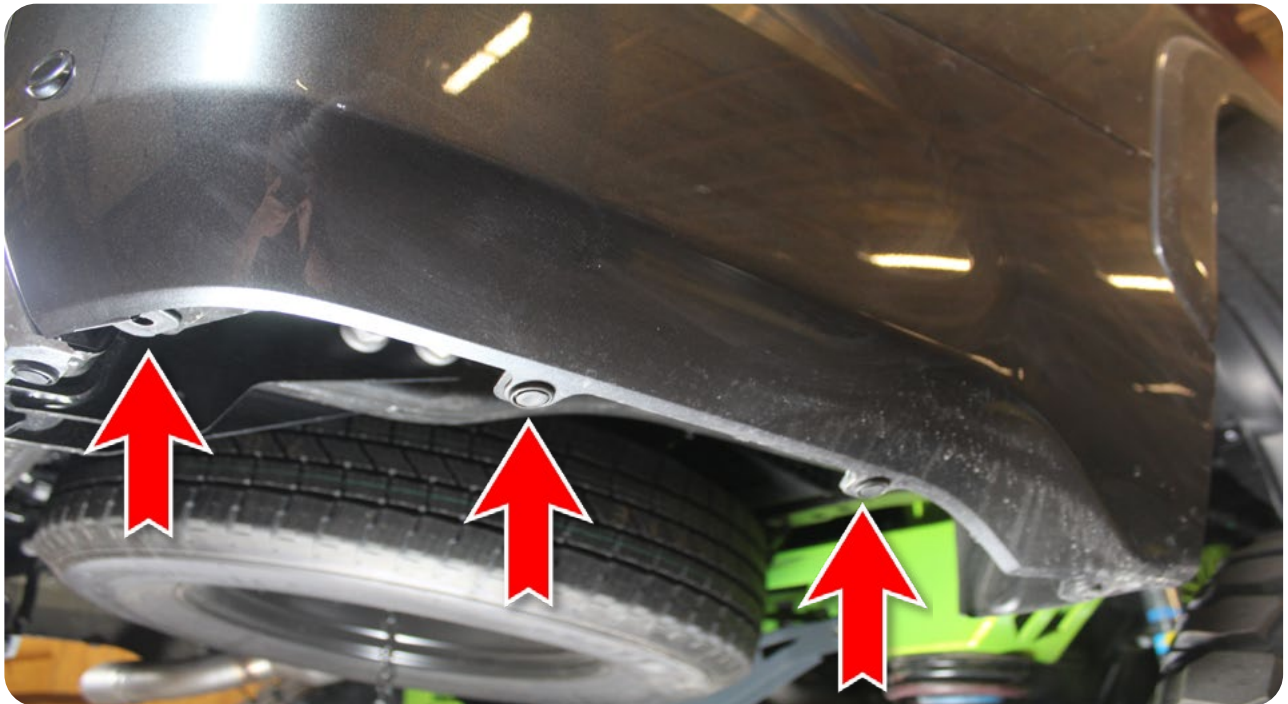


# INSTALLATION GUIDE

STEALTH FIGHTER REAR BUMPER

22+/TOYOTA TUNDRA

## INSTALLATION





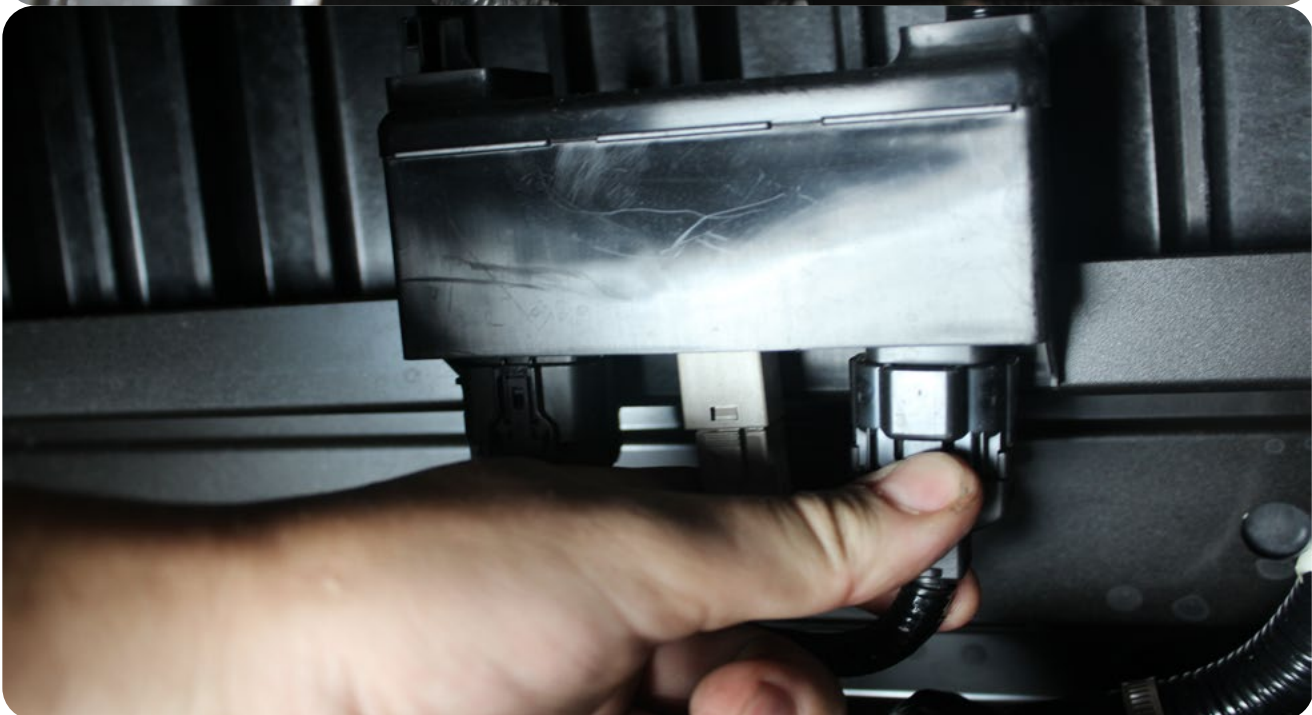
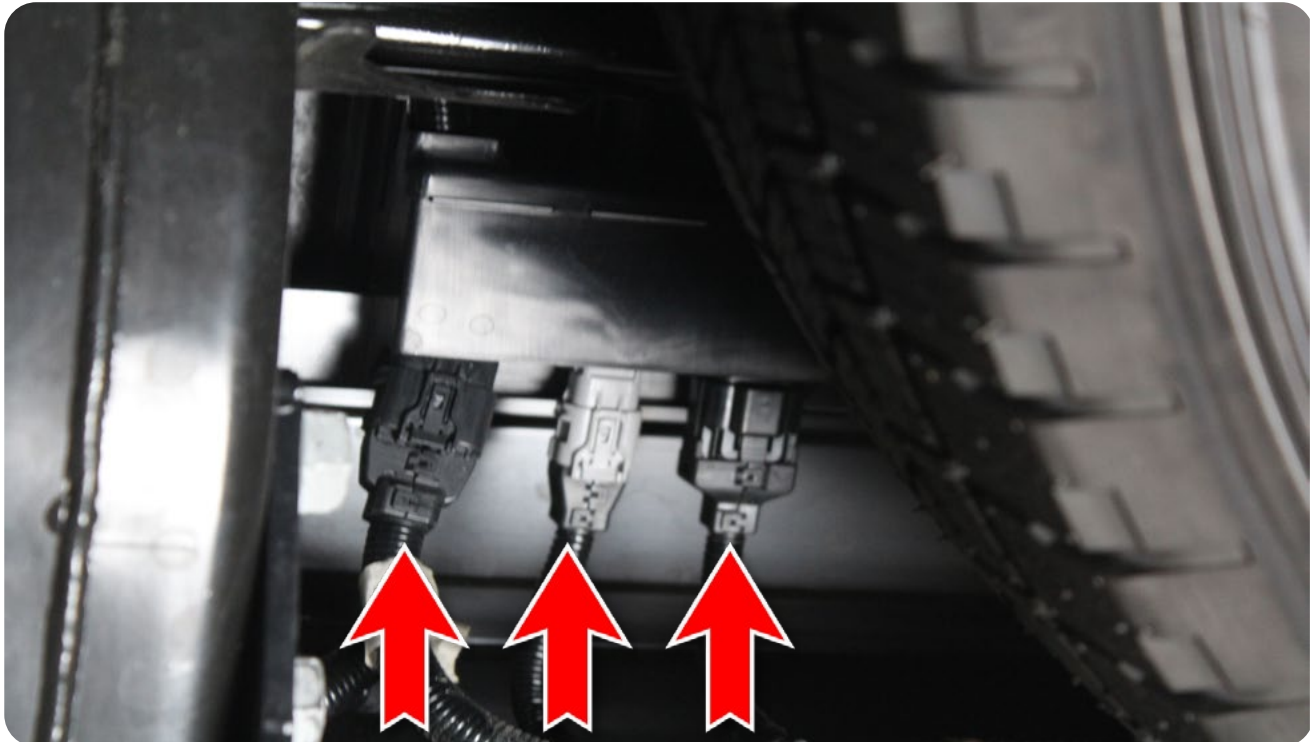
## STEALTH FIGHTER REAR BUMPER

22+/TOYOTA TUNDRA

## INSTALLATION

### STEP 38

Plug the wiring harness back into the three plugs located on the passenger side of the spare tire.



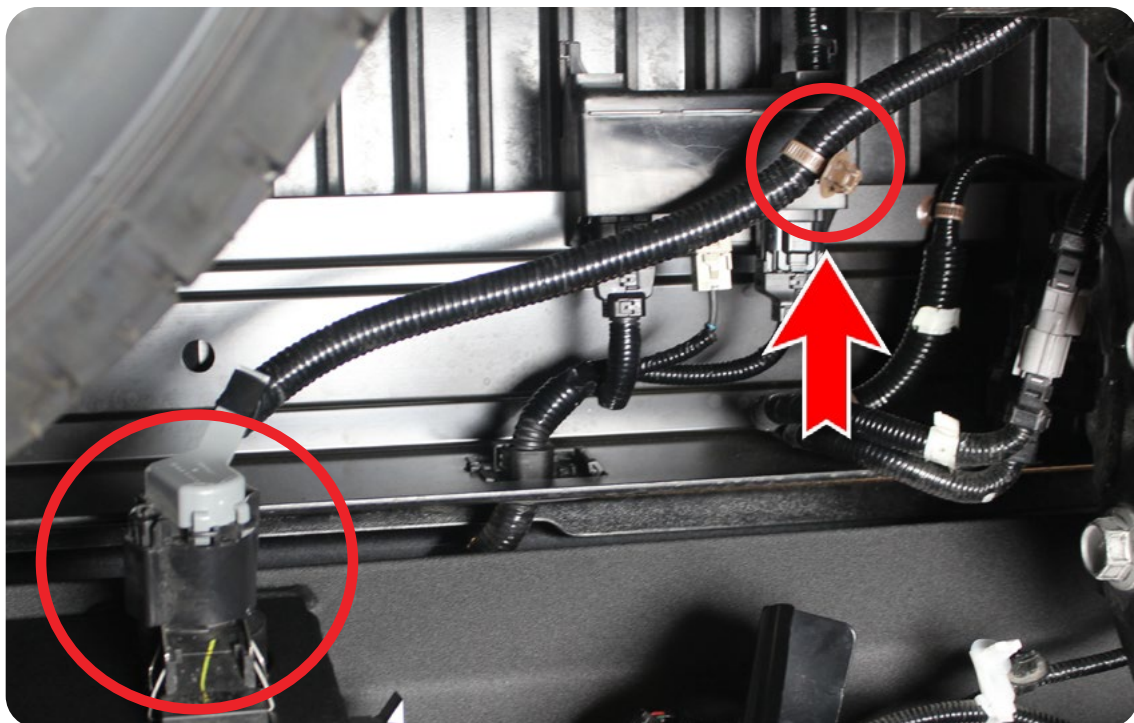
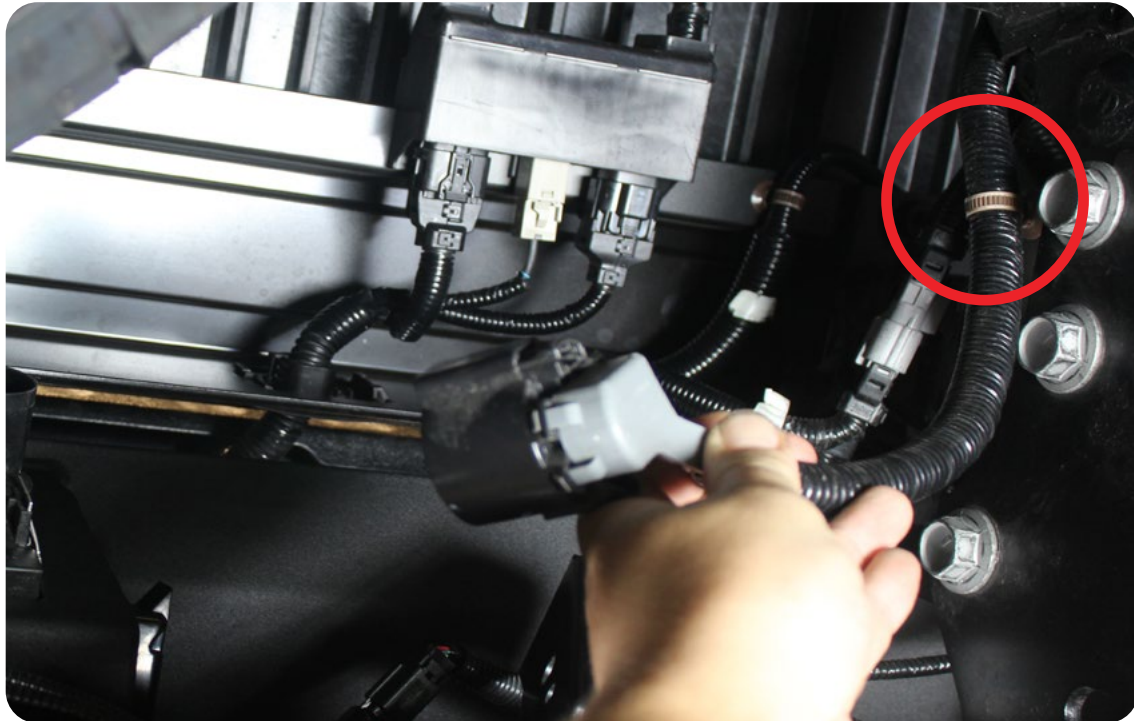
## STEALTH FIGHTER REAR BUMPER

22+/TOYOTA TUNDRA

## INSTALLATION

### STEP 39

Remove wire loom clip for the trailer plug in to reach. Plug back in.





# INSTALLATION GUIDE

## STEALTH FIGHTER REAR BUMPER

22+/TOYOTA TUNDRA

## INSTALLATION

### STEP 40

Install your plastic snap-in nuts and install your license plate using the provided 1/4" Sheet metal screw using a (5/16 Wrench).





# INSTALLATION GUIDE

## STEALTH FIGHTER REAR BUMPER

22+/TOYOTA TUNDRA

## INSTALLATION

### STEP 41

Stand back and enjoy your new ADD Stealth Fighter™ rear bumper.

Check and re-tighten, if needed, all mounting bolts after 100 miles and periodically thereafter.



THIS PRODUCT IS PROTECTED BY ONE OR MORE U.S. PATENTS  
[WWW.ADDICTIVEDESERTDESIGNS.COM/PATENTS](http://WWW.ADDICTIVEDESERTDESIGNS.COM/PATENTS)

FOR ADDITIONAL SUPPORT OR TECHNICAL QUESTIONS,  
PLEASE CALL 480-671-0820 OR  
EMAIL [INFO@ADDICTIVEDESERTDESIGNS.COM](mailto:INFO@ADDICTIVEDESERTDESIGNS.COM)